



ABELHAUS 1884
MODULAR HOME MANUFACTURER

abelhaus.com

Homes for modern living



ABEL HAUS 1884

HOMES FOR MODERN LIVING

AbelHaus is making big efforts to achieve its goals to the satisfaction of customers, partners, and employees. Accordingly, we have defined a mission and vision that help us achieve our strategic goals.

We have been successfully building houses since as far back as the 1950s. It is over sixty years of experience, development, and constant progress. In those past sixty years, we have built over 1.5 million square feet of living space worldwide.

mission

We are a company whose employees have many years of experience in designing, manufacturing, and assembling houses. Our goal is to improve the culture of living in more environmentally and energy-efficient prefabricated houses while raising awareness of the benefits of building and living in such houses. Also, our mission is to raise the profile of low-energy prefabricated houses to European standards, which this form of construction deserves.

vision

AbelHaus is a construction company operating in the field of design, manufacture, and construction of prefabricated low-energy houses. Our vision is to become the leading construction company in the construction of prefabricated houses in Europe. We want to become a significant exporter of finished houses to the European Union. On the other hand, we want to offer our customers the best quality and free choice of the appearance of the future house at market-acceptable prices.





Top 10

One of the leading prefabricated house manufacturers in Europe.



OWN

Production facilities in Europe, including in Germany.



1.000+

Employees who give their best every day to make your ideas a reality.



20.000

Built houses, and each one of them is unique.



we offer **HIGH EFFICIENCY**

Low-energy houses significantly reduce carbon dioxide emissions, provide much better comfort, and reduce energy consumption

AbelHaus Low-energy houses are carefully designed and built for absolute comfort, while guaranteeing minimal energy consumption for heating, lighting, etc.

Minimal energy consumption can be guaranteed thanks to our special construction system based on a high level of thermal insulation, vapour-tight casing, controlled ventilation system and maximizing the use of heat gains from solar radiation through optimal design.



we offer **DUPLEX HOUSE**

Like villa, but in small size

A duplex house is a residential unit for a single family built on two floors, but with single kitchen and dining area. Its looks and design are the same as that of a villa, but the size is small. Usually, a duplex house is characterised by separate entry points to both the floors.



we offer **COTTAGE HOUSE**

Homely feel-good atmosphere

There is no fixed definition for the term cottage house. In general, a cottage house is generally understood to mean a rather smaller house in the country or on the beach, often also a holiday home. It offers a homely feel-good atmosphere that fills the word “home” with life.

A cottage house is, so to speak, the English variant of the country house style. It's rustic, natural, and very cozy. While the houses used to be single-story and small, this no longer applies to today's cottage style – on the contrary: Cottage houses are usually free-standing and spacious.



we offer **MULTI LEVEL HOUSE**

Wonderful houses with more floors for different activities

The multi-level is a wonderful, deliberate house style that modern architects created to group similar living activities, such as sleeping or entertaining, separating the quiet activities from the more boisterous ones.

There are generally three or more levels (sort of like a split with more levels), and looking at the front of a multi, it looks to be split down the middle with a one-and-a-half story home on one half stuck on to a two-story home on the other.





high efficiency

ABEL HE-182

ABEL HE-182 The perfect house for everyday living or a holiday that, thanks to the large glass openings, provides a pleasant feeling of connection with the natural environment.

182 M²

BRUTO

122 M²

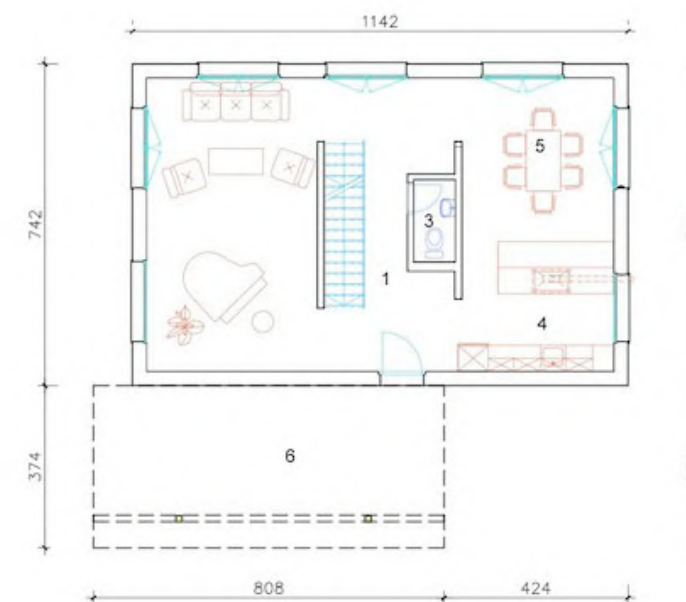
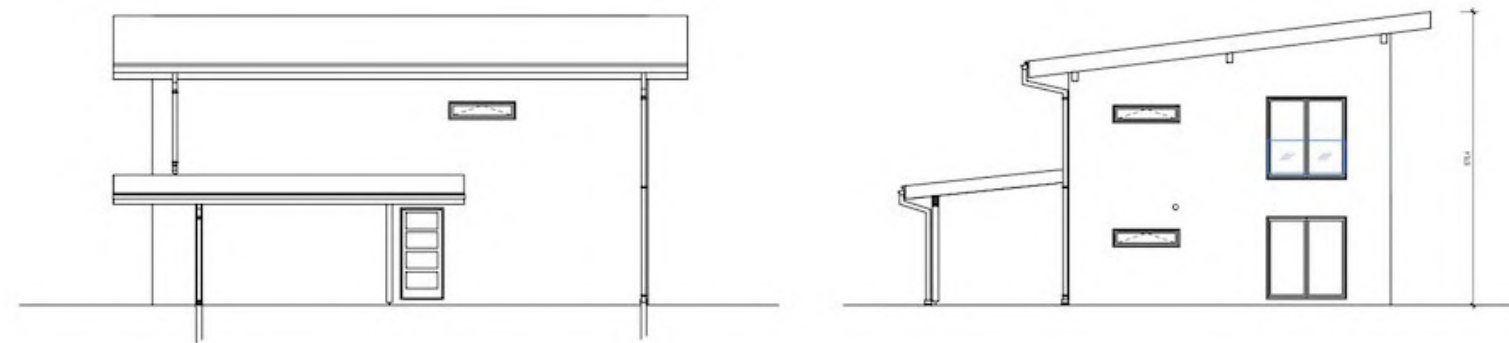
NETO

3

BEDROOMS

A+

ENERGY CLASS





high efficiency

ABEL HE-212

ABEL HE-212 This modern floor offers both functionality and comfort. Daylight illuminates the rooms of the house through large windows on several sides. The simplicity of this house allows the buyer to choose the external appearance, such as a facade made of stone or wood.

212 M²

BRUTO

162 M²

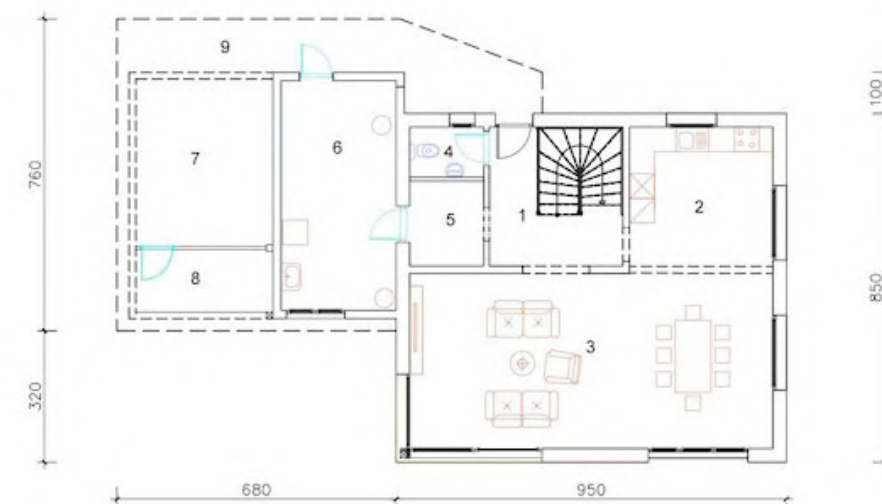
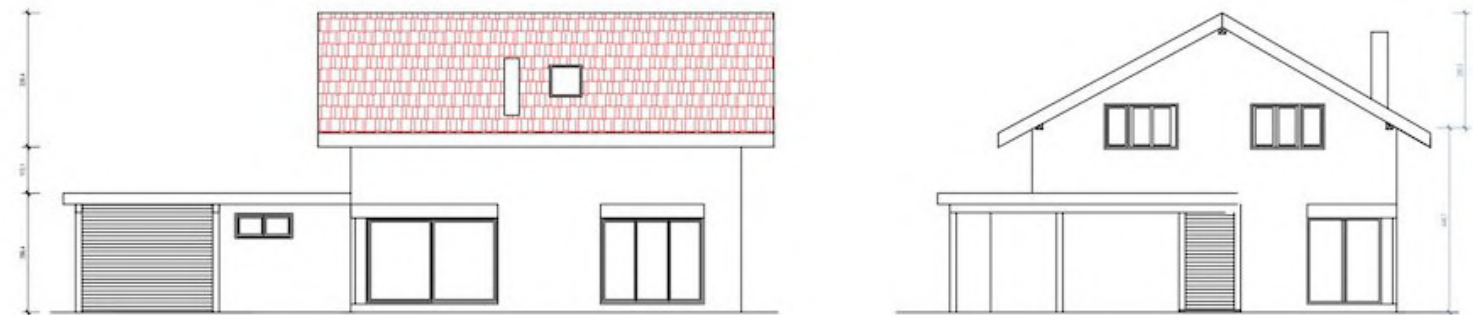
NETO

4

BEDROOMS

A+

ENERGY CLASS





high efficiency

ABEL HE-226

The cubic architecture of the family house 226 embodies three rooms in a modern floor plan. With its design, the 226 house is a representative of the esteemed modern architecture, which is manifested in clean lines, the intertwining of the cube, and the drawing of the surfaces on the facade.

226 M²

BRUTO

176 M²

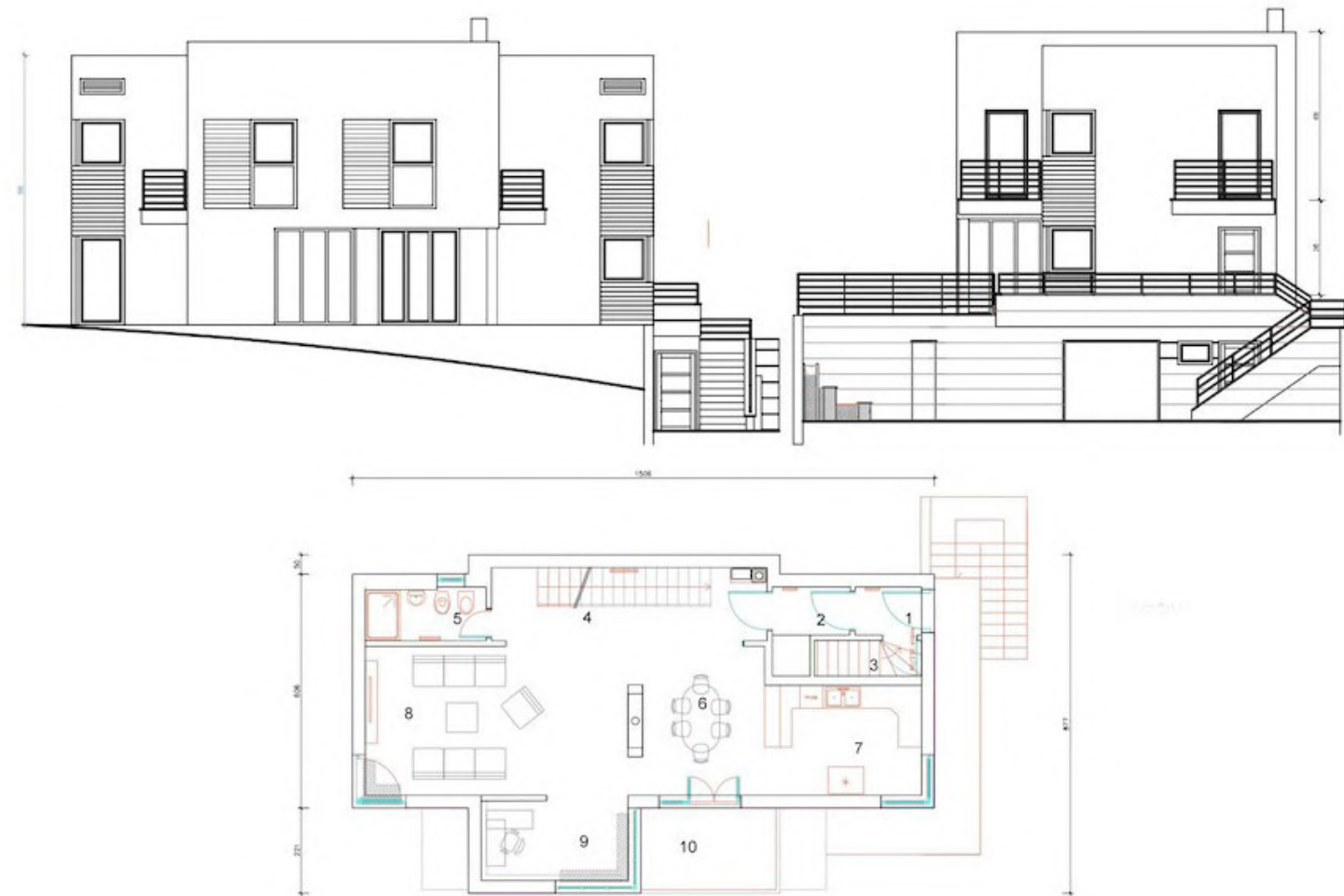
NETO

3

BEDROOMS

A+

ENERGY CLASS





high efficiency

ABEL HE-258

ABEL HE-258 Three-room house 258 sloping roof, beautiful, will win you over with the look and functionality that all family houses aspire. The compromise of an open floor plan and spatial separation was achieved by forming a transitional kitchen and achieving flawless movement through the daily group of rooms.

258 M²

BRUTO

215 M²

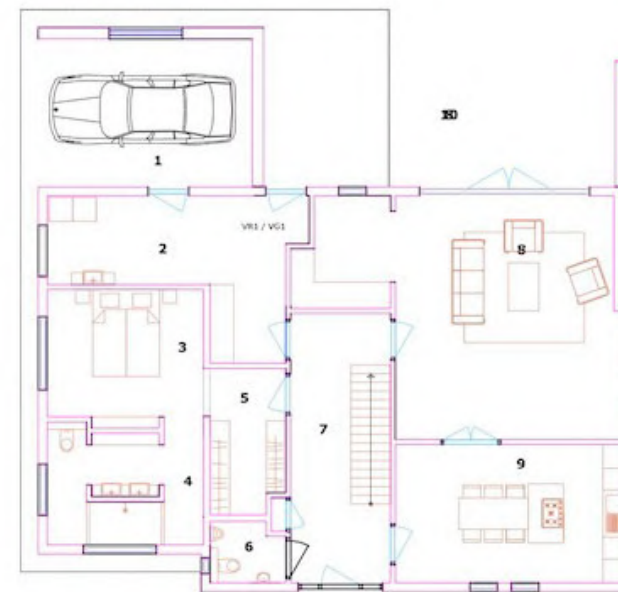
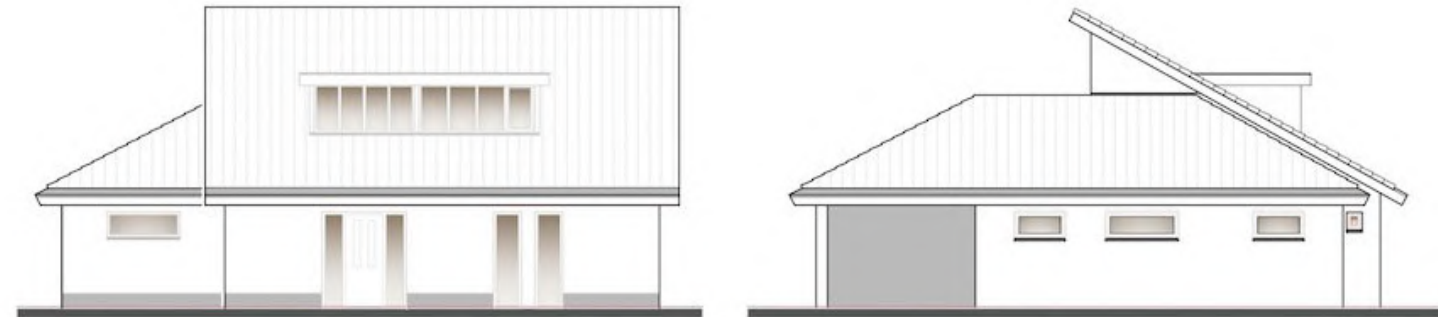
NETO

3

BEDROOMS

A+

ENERGY CLASS





high efficiency

ABEL HE-279

ABEL HE-279 Immediately upon entering a house like this, a large amount of daylight is noticeable, which makes each room very comfortable to stay. This is especially pronounced in the combined space of the living room, dining room, and kitchen, which covers over 279 square meters. Four upstairs rooms and two large bathrooms make the two-story one of the most spacious Promo residential homes. Its exterior is especially attractive with a large porch and terrace. The characteristic of this house is an interesting solution to the roof construction and a wooden facade where the buyer chooses the color.

279 M²

BRUTO

222 M²

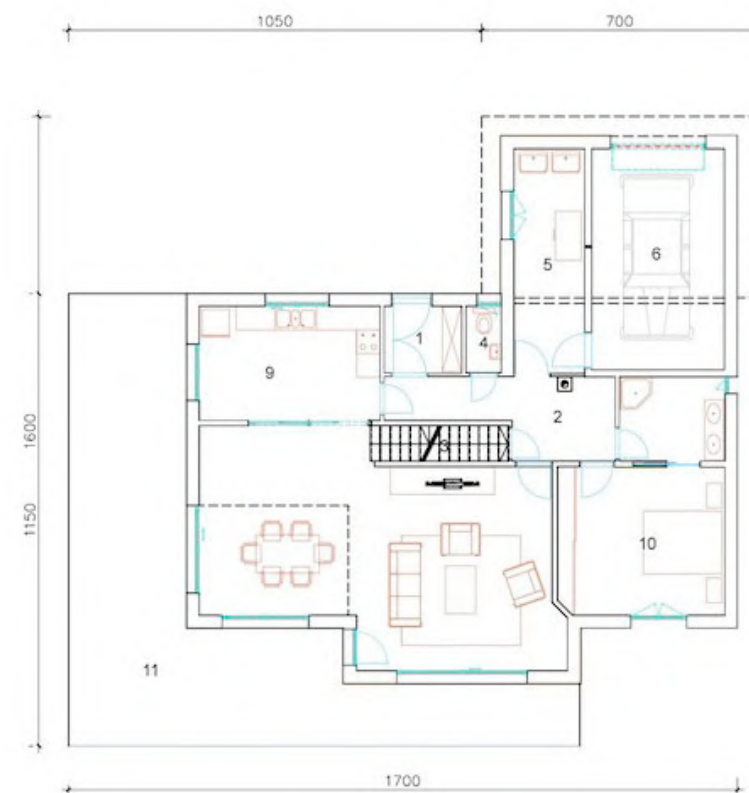
NETO

4

BEDROOMS

A

ENERGY CLASS





high efficiency

ABEL HE-289

ABEL HE-289 A house that, above all, captivates with its modernity, both in the design of the exterior and interior and in the choice of building materials.

289 M²

BRUTO

237 M²

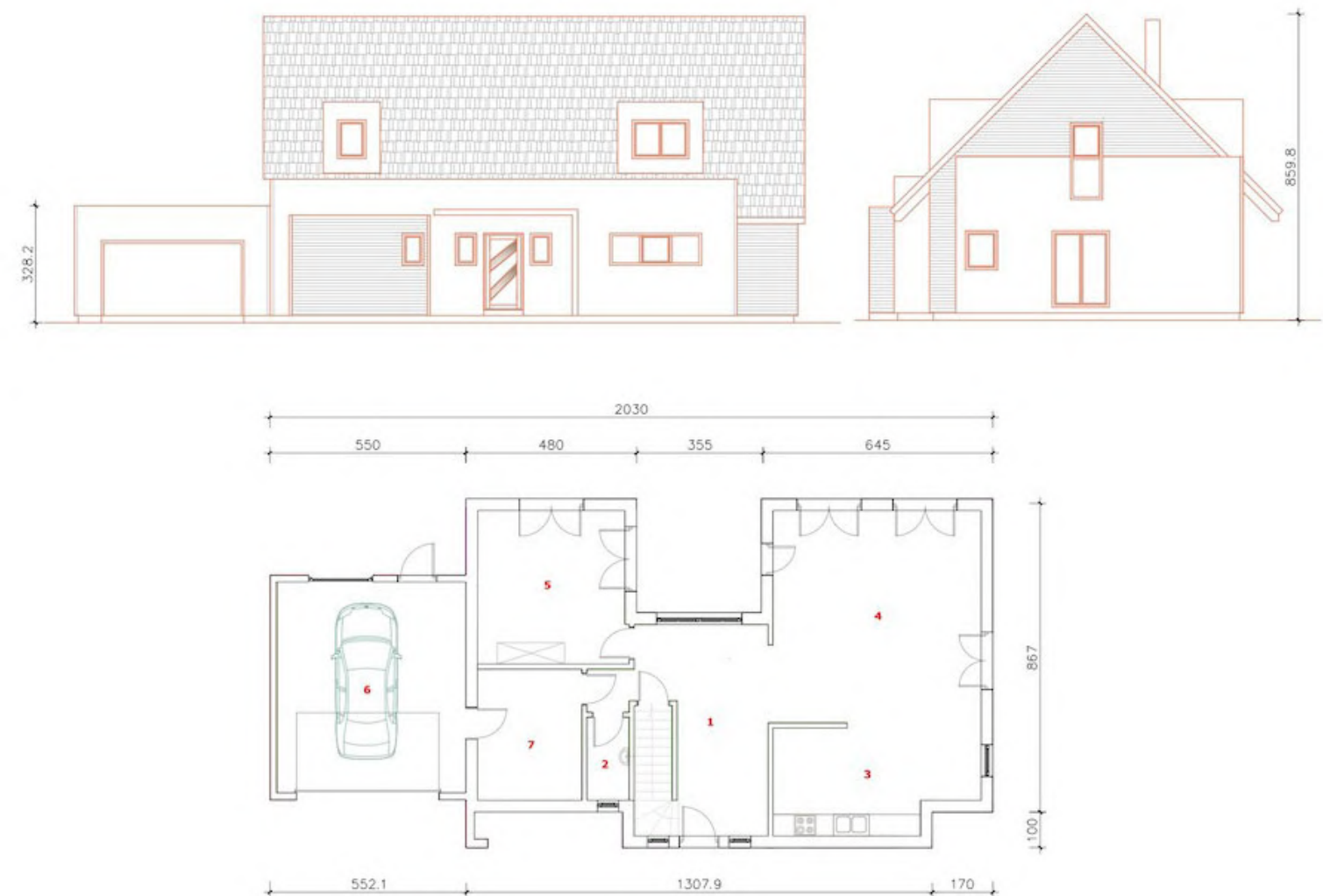
NETO

4

BEDROOMS

A

ENERGY CLASS





duplex

ABEL D-295

ABEL D-295 The interior of the six-room prefabricated house 295 is rich in content and yet retains a compact exterior. The house stands out with its overall design and accents of details. Prominent eaves in two levels and accentuated verticality of dimensions give the impression of large in small.

295 M²

BRUTO

222 M²

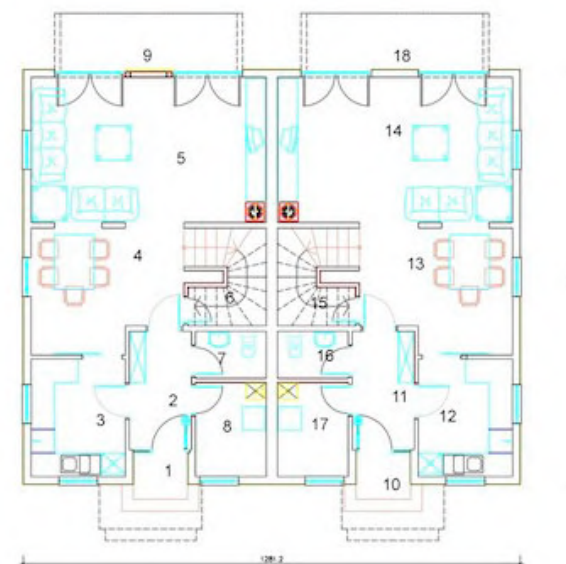
NETO

6

BEDROOMS

B

ENERGY CLASS





duplex

ABEL D-160

ABEL D-160 house contains three bedrooms, a bathroom, and a large living room with a kitchen. The high ceiling in the living area gives this house extra freshness and a feeling of comfort.

160 M²

BRUTO

123 M²

NETO

3

BEDROOMS

B

ENERGY CLASS





cottage

ABEL C-53

ABEL C-53 House 53 is compact in layout and is intended as a three-room house. The perfect house for everyday living or a holiday that, thanks to the large glass openings, provides a pleasant feeling of connection with the natural environment.

53 M²

BRUTO

45 M²

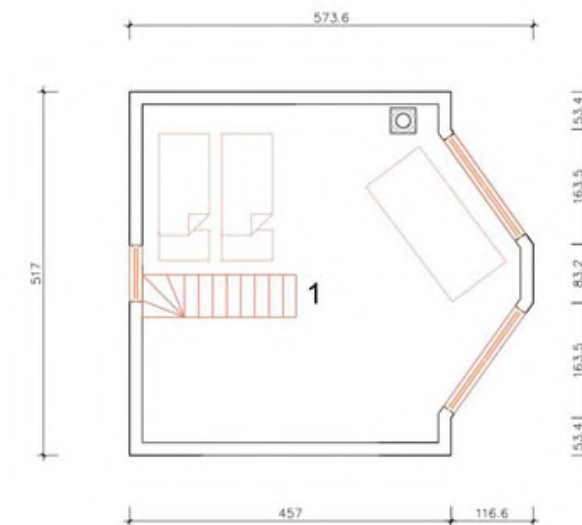
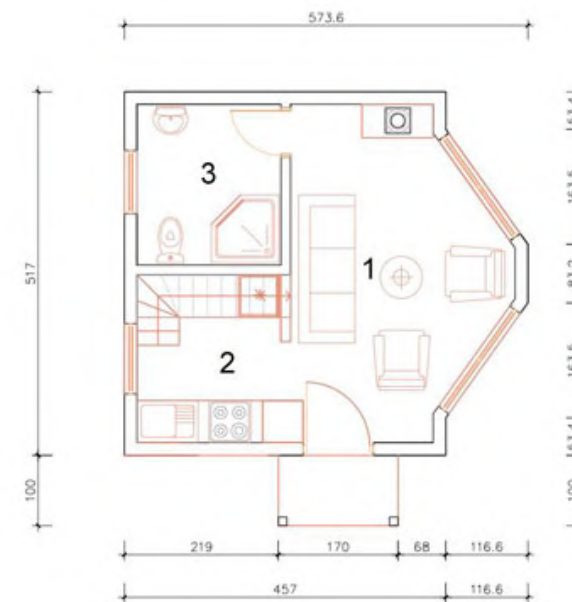
NETO

3

BEDROOMS

C

ENERGY CLASS





cottage

ABEL C-71

ABEL C-71 This house, which is designed according to the wishes and needs of the customer, proved to be extremely popular. It represents a harmony of simple style and impeccably defined layout of rooms on an area of 71 square meters.

71 M²

BRUTO

53 M²

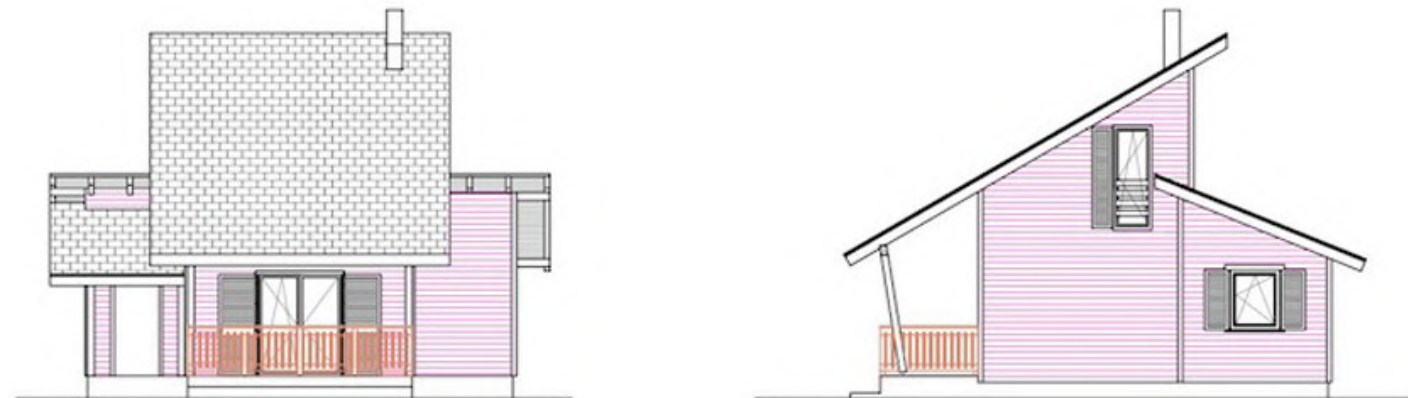
NETO

2

BEDROOMS

C

ENERGY CLASS





cottage

ABEL C-112

ABEL C-112 house contains three bedrooms, a bathroom, and a large living room with a kitchen. The high ceiling in the living area gives this house extra freshness and a feeling of comfort.

112 M²

BRUTO

101 M²

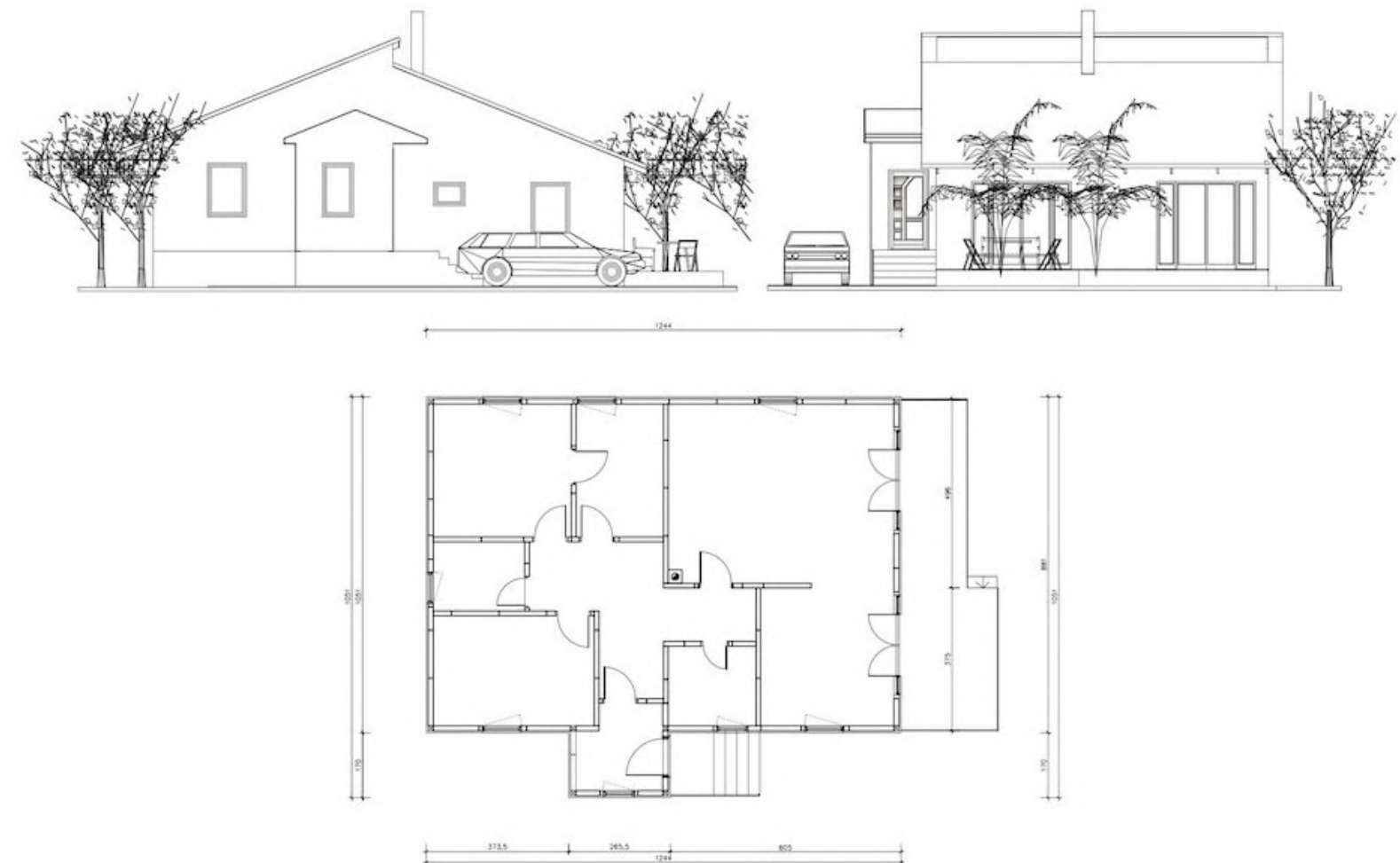
NETO

3

BEDROOMS

C

ENERGY CLASS





cottage

ABEL C-113

ABEL C-113 The 113 is a prototype that comes to mind when considering the shape of a family home. As such, it embodies the very essence. The entrance canopy is an introduction to the unique story of each family that settles under this roof

113 M²

BRUTO

84 M²

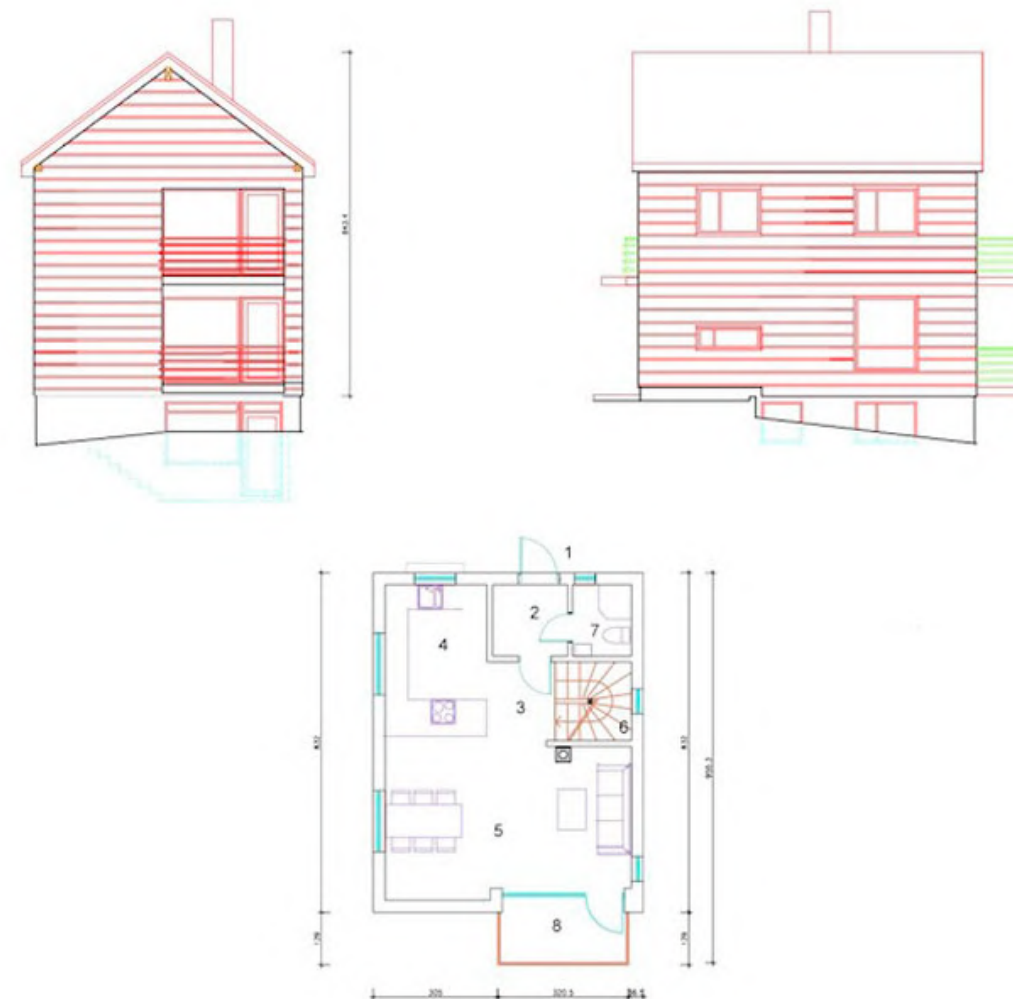
NETO

3

BEDROOMS

B

ENERGY CLASS





cottage

ABEL C-119

ABEL COTTAGE-119 is a combination of timeless design and closeness to nature in one solution. Numerous glass surfaces allow an influx of daylight as-well-as a beautiful view. Due to the number of rooms and their multifunctional possibilities, this house is synonymous with quality and comfort.

119 M²

BRUTO

89 M²

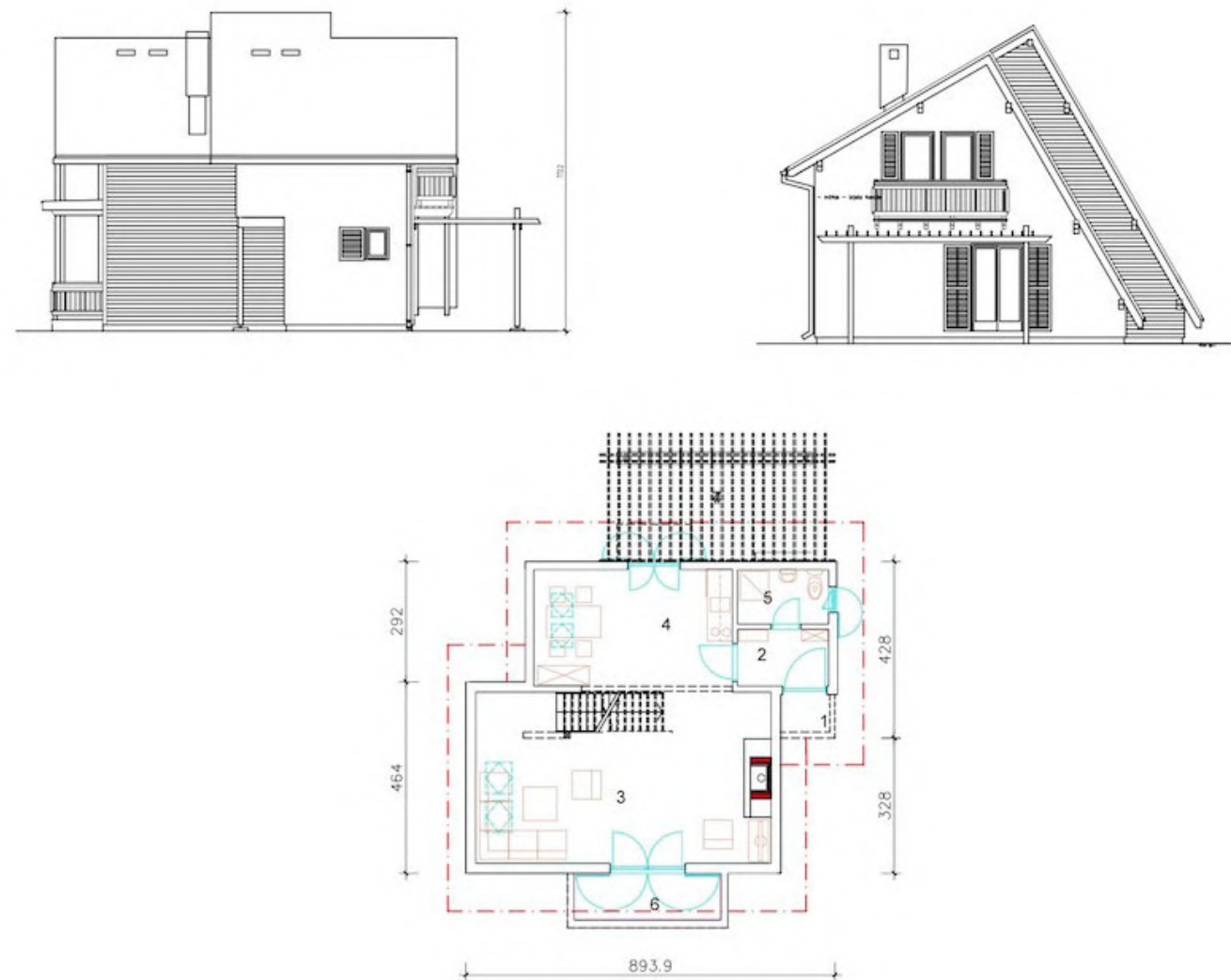
NETO

3

BEDROOMS

B

ENERGY CLASS





cottage

ABEL C-140

ABEL COTTAGE-140 A large house built in Scandinavian style. Immediately upon entering a house like this, a large amount of daylight is noticeable, which makes each room very comfortable to stay.

140 M²

BRUTO

107 M²

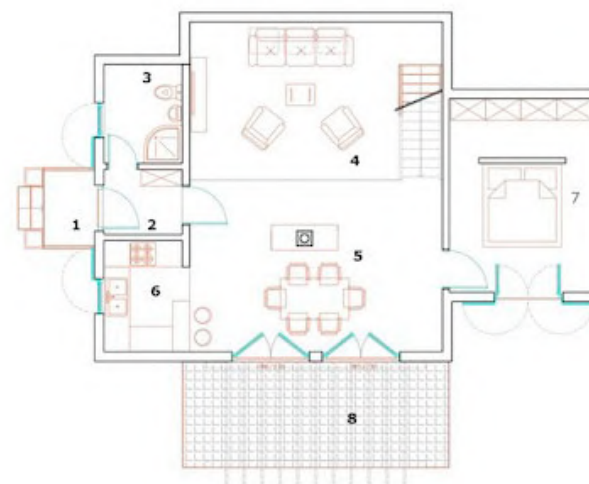
NETO

3

BEDROOMS

B

ENERGY CLASS





cottage

ABEL C- 154

ABEL COTTAGE 154 Wooden house of a simple shape with perfectly used and functional space, with special care for the warmth of the family home as well as the real warmth on cold days.

154 M²

BRUTO

103 M²

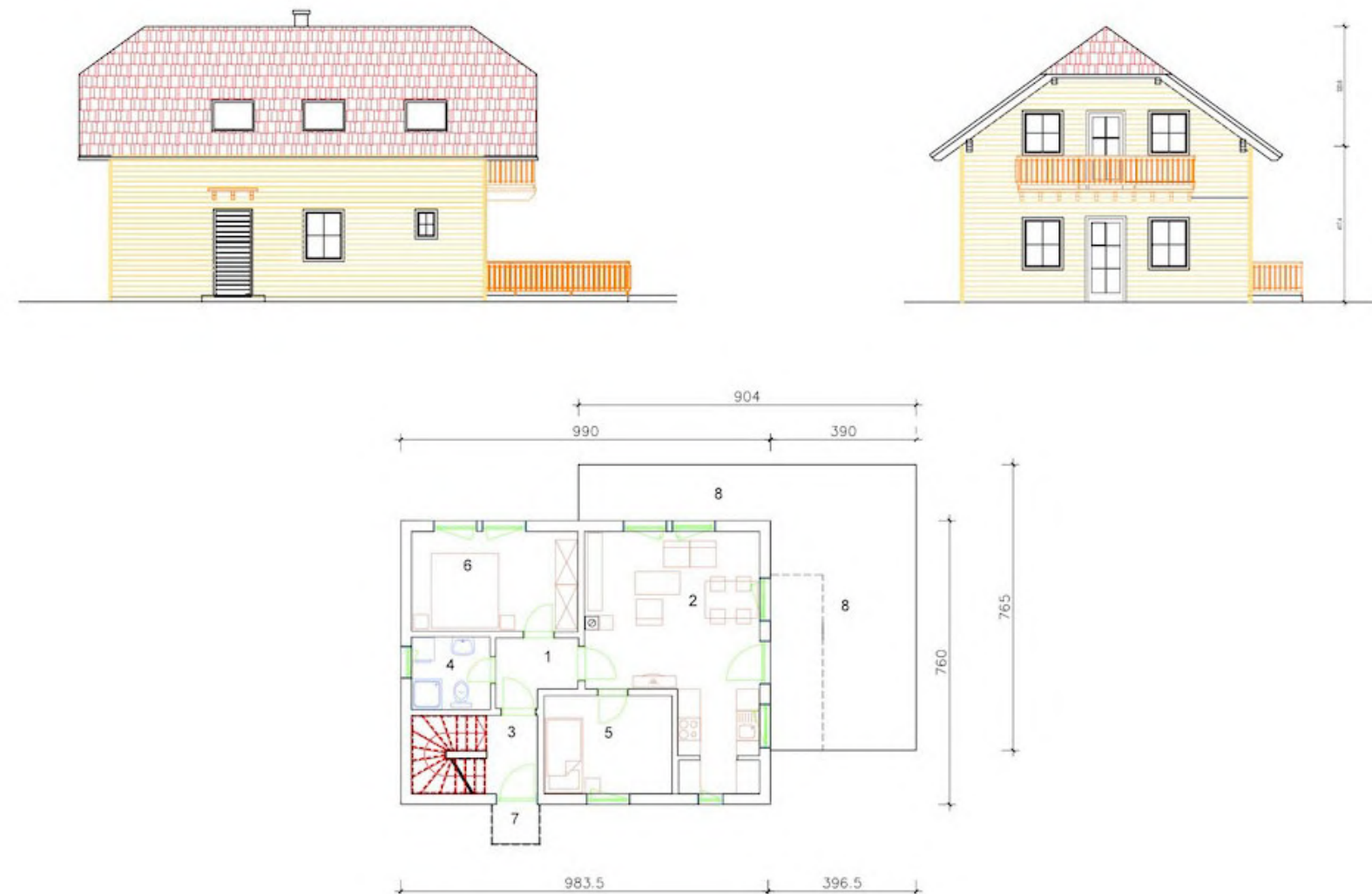
NETO

4

BEDROOMS

B

ENERGY CLASS





multi level house

ABEL 142

The two separate units of the 142 prefabricated house are joined in an elongated shape to satisfy every aspect of life. Two entrances share a covered entrance niche and lead to a family house with a connection to a multi-purpose space that can serve as an office space or for socializing.

142 M²

BRUTO

104 M²

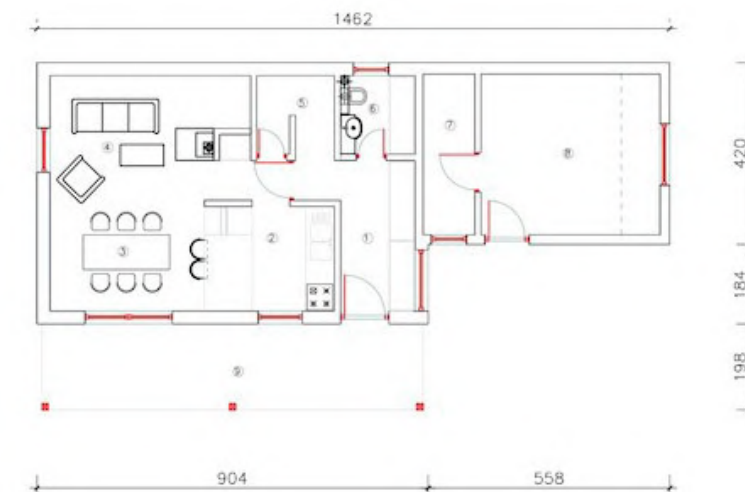
NETO

3

BEDROOMS

B

ENERGY CLASS





multi level house

ABEL 152

A house for those who prefer classic architectural forms in which there are skillful and discreet inserted achievements of modern construction.

152 M²

BRUTO

110 M²

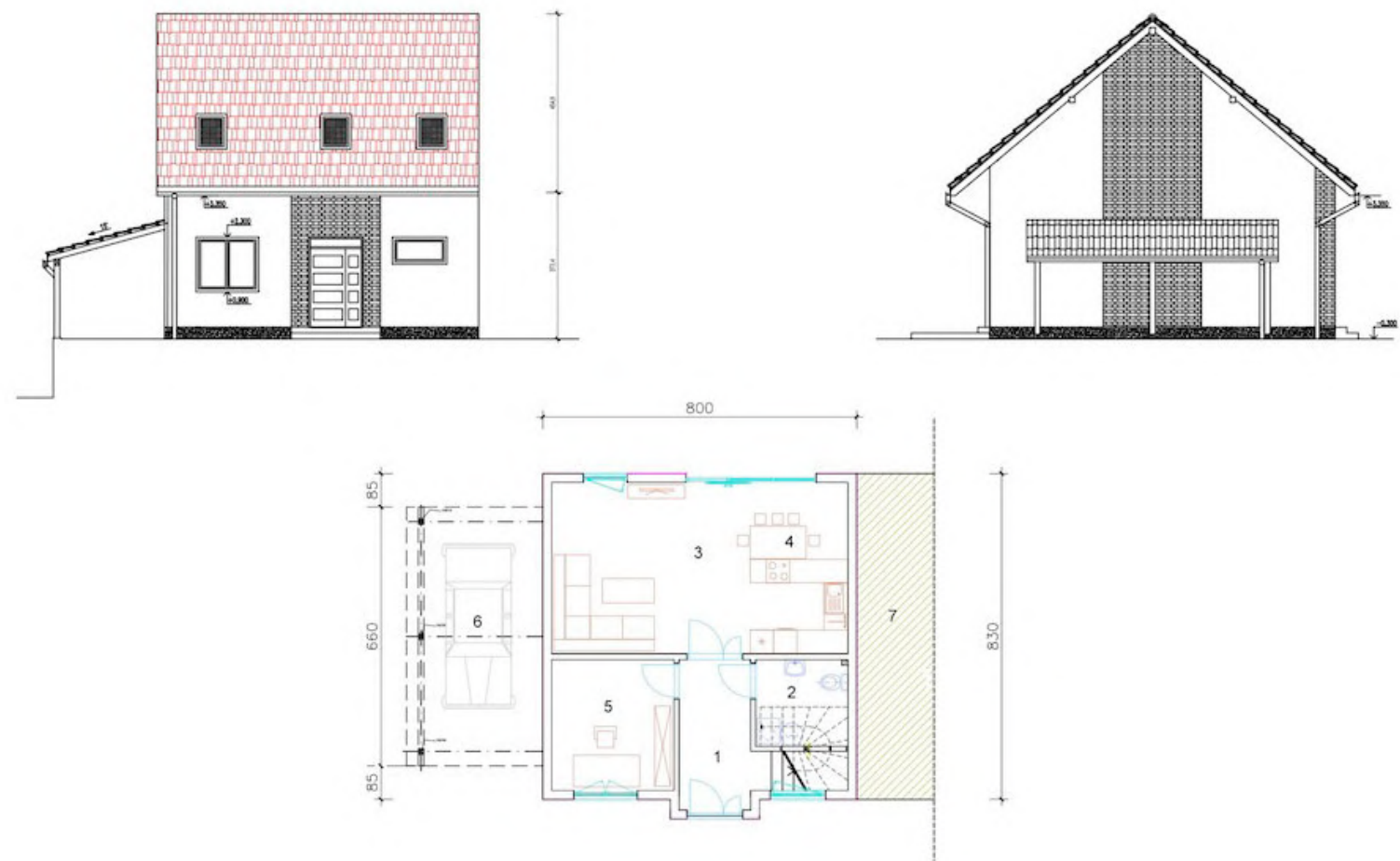
NETO

4

BEDROOMS

B

ENERGY CLASS





multi level house

ABEL 158

158 is a house of modern design. The advantage of a simple exterior appearance of the house is reflected in the many options when choosing materials and colors. The ground floor is designed for a spacious living room, kitchen, and additional toilet while in the upper part there are three bedrooms and a large bathroom.

158 M²

BRUTO

128 M²

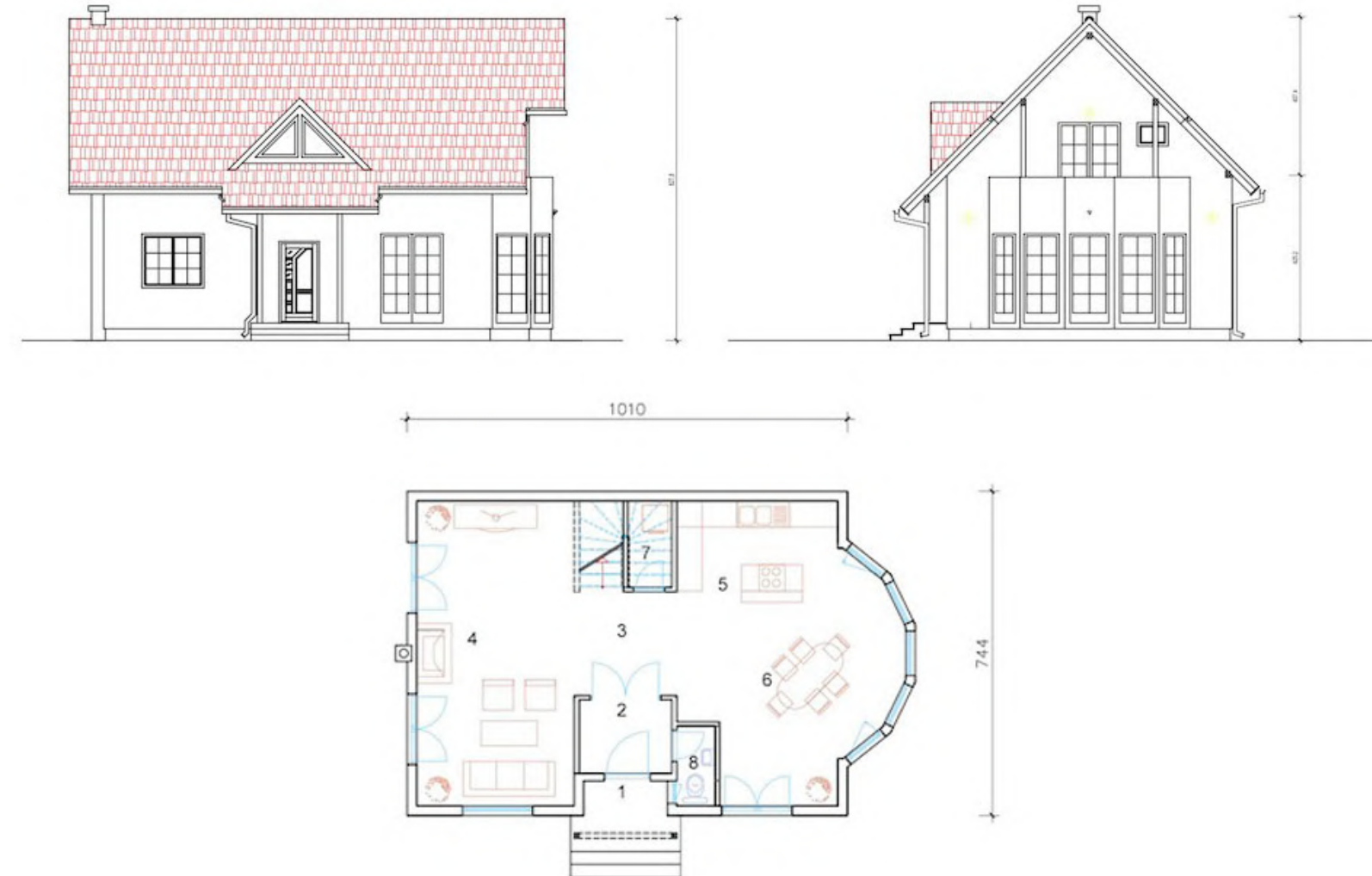
NETO

3

BEDROOMS

B

ENERGY CLASS





multi level house

ABEL 165

The house with an attic 165 in its area will offer you much more functionality and content than its basic four rooms. The covered entrance of the prefabricated house 165 leads to a high, two-story hall with direct access to the attic gallery. The airy positions from there lead you further through the house: into a spacious bedroom, a large storage room, and a smaller bathroom, and an almost open living room with a kitchen.

165 M²

BRUTO

145 M²

NETO

4

BEDROOMS

B

ENERGY CLASS





multi level house

ABEL 167

167 is an idyllic family house with an attic with as many as three rooms spread over two floors. MK 167 brings an extremely pleasant family atmosphere in a compositionally dynamic space where everyone can find their corner.

167 M²

BRUTO

135 M²

NETO

3

BEDROOMS

A

ENERGY CLASS





multi level house

ABEL 183

The four-room modern house 183 flirts with the traditional form. In the unique composition of the family house 183, closed frames of irregular shape and broken edge lines stand out, all complemented by a combination of texture and color.

183 M²

BRUTO

137 M²

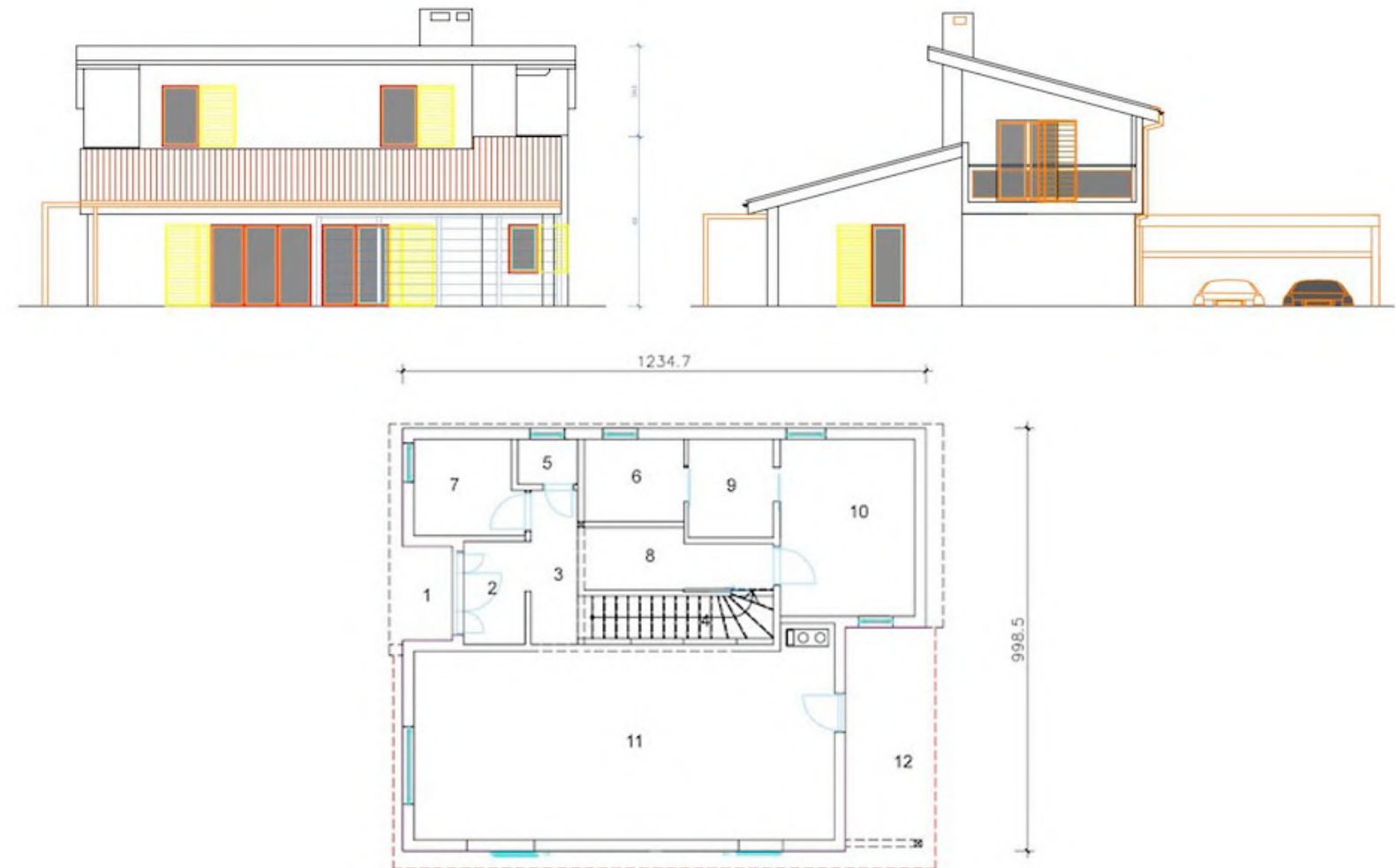
NETO

3

BEDROOMS

B

ENERGY CLASS





multi level house

ABEL 190

The house with its “elbow” shape and layout that follows the line of functionalism with separate areas for living and relaxing, as well as a beautiful terrace, an oasis separated from the view ideal for family gatherings.

190 M²

BRUTO

165 M²

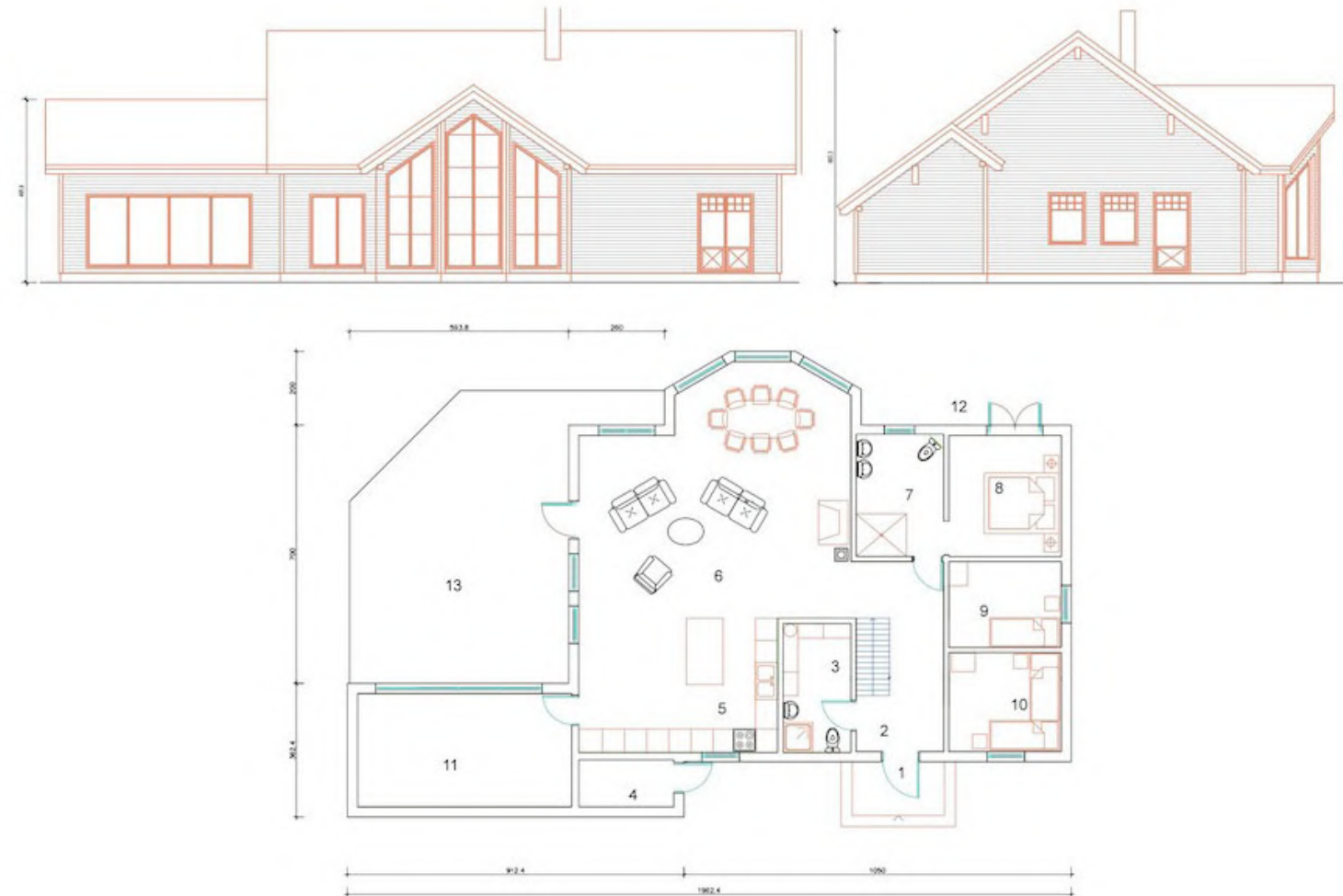
NETO

5

BEDROOMS

B

ENERGY CLASS





multi level house

ABEL 217

The warm family atmosphere is framed by a three-room ground floor house 217. The lavishly dimensioned floor plan of the 217 family home will provide the three-member family with the highest level of comfort.

217 M²

BRUTO

150 M²

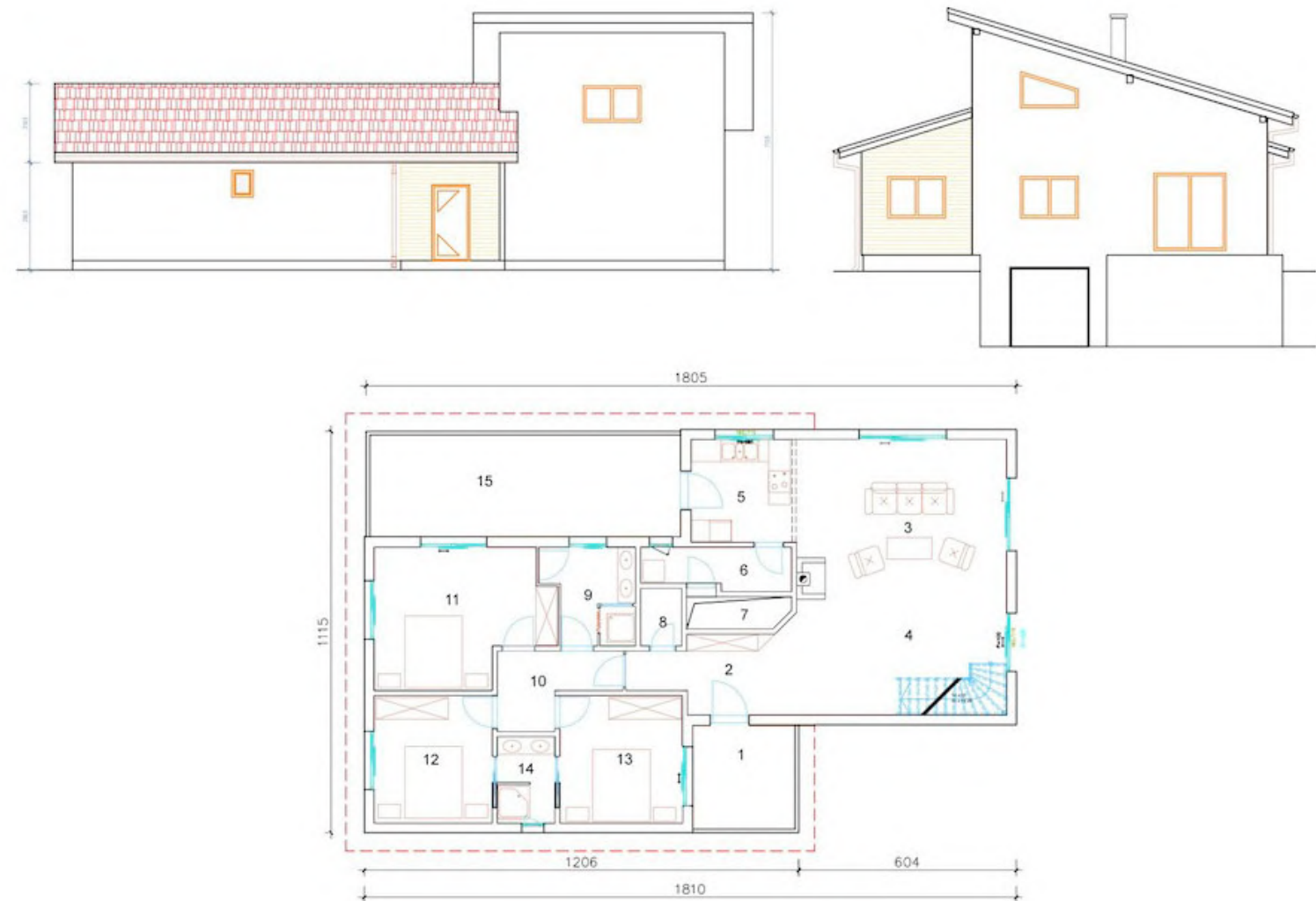
NETO

3

BEDROOMS

A

ENERGY CLASS





multi level house

ABEL 256

Luxurious, rich house that offers its inhabitants, along with a comfortable and cozy living room, a quality private intimate corner with bathrooms next to each bedroom.

256 M²

BRUTO

156 M²

NETO

4

BEDROOMS

A

ENERGY CLASS





multi level house

ABEL 288

288 is a five-room, modern house for families of different lifestyles that offers a high degree of comfort and economy of living.

288 M²

BRUTO

227 M²

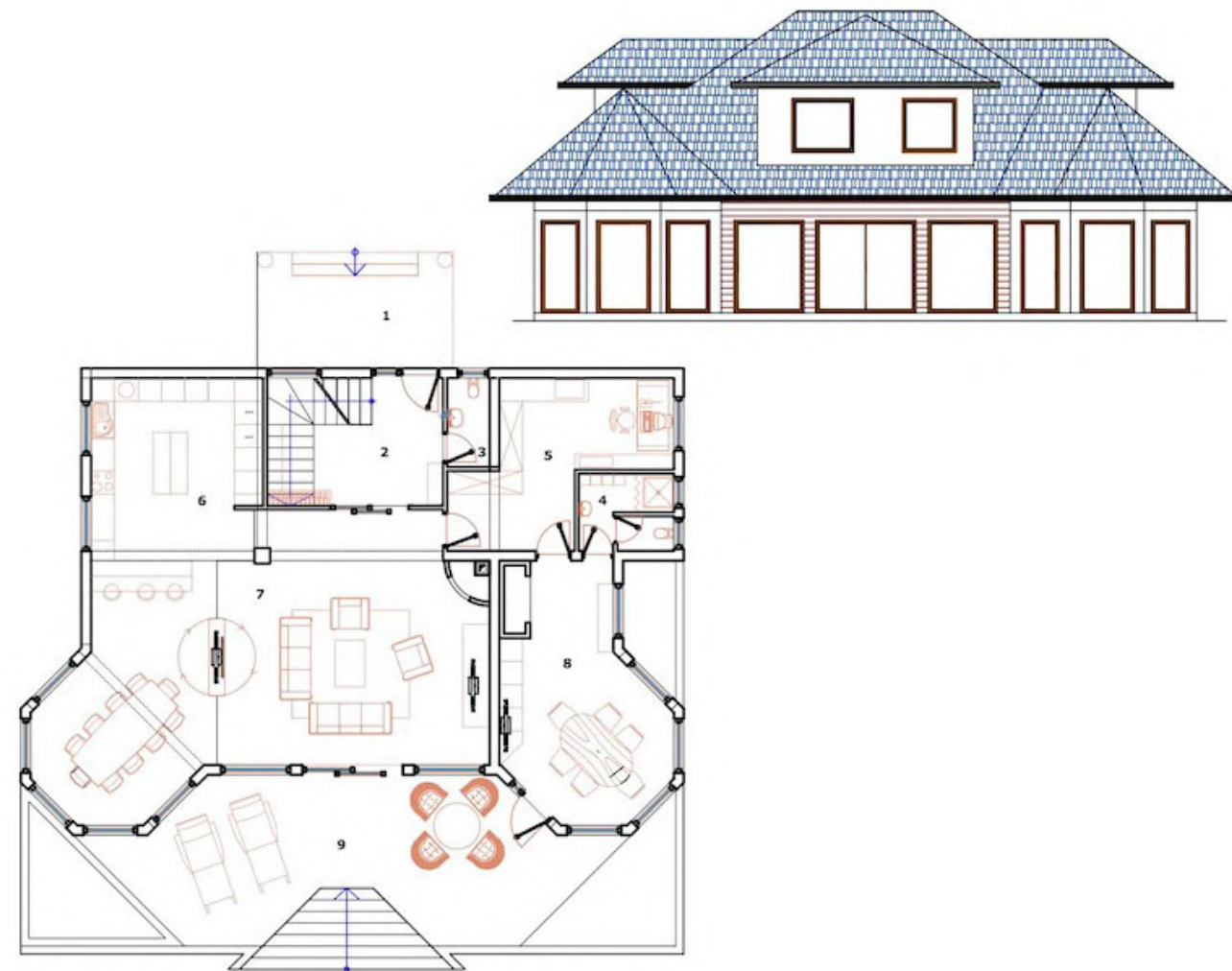
NETO

5

BEDROOMS

A

ENERGY CLASS





multi level house

ABEL 125

The classic exterior of the three-room prefabricated house 125 hides modern ways of designing and using the space. A departure from the traditional contents of the family house is given by differently interpreted purposes of the room: the room is no longer just a sleeping space but has an expanded role of socializing and work activities.

125 M²

BRUTO

89 M²

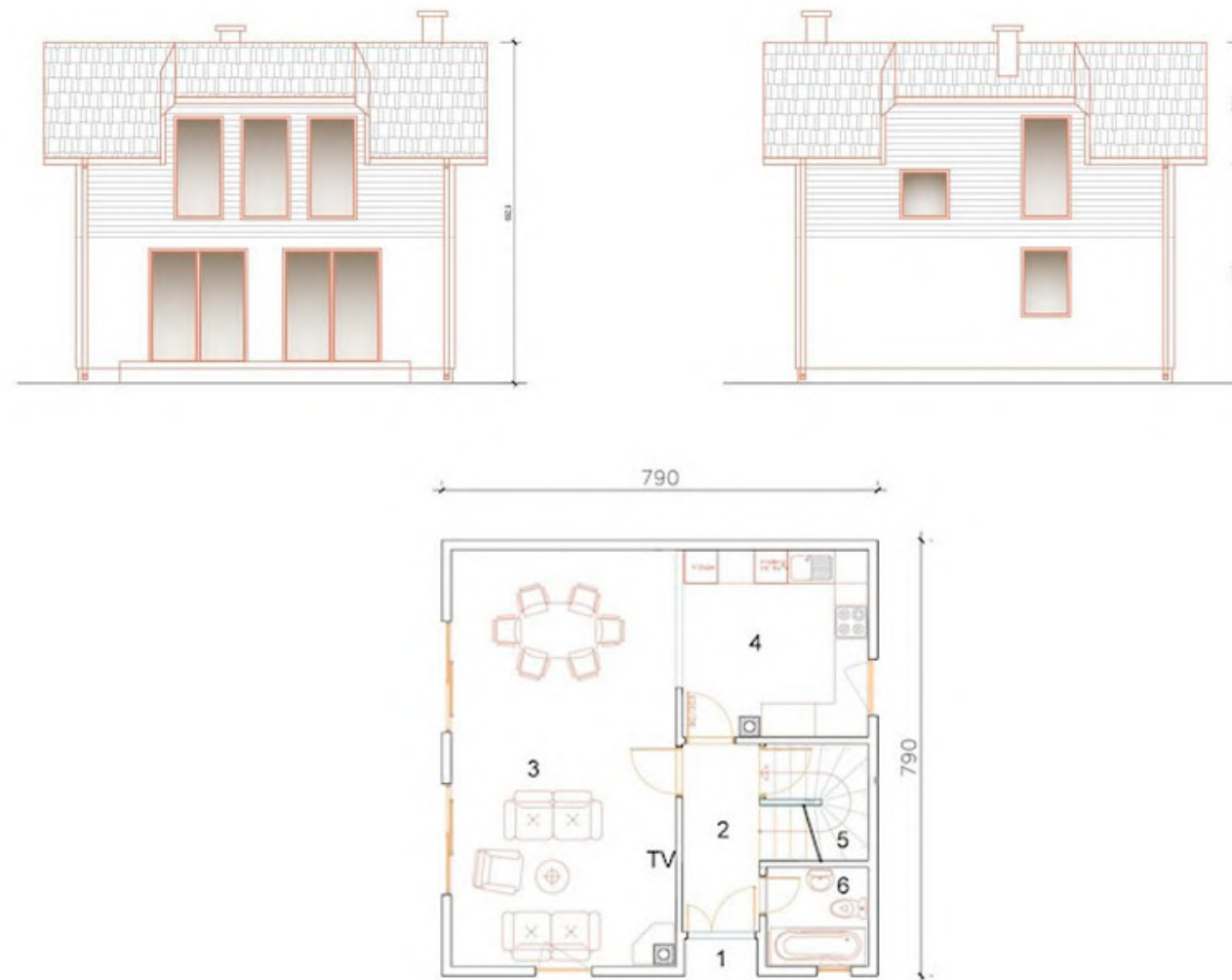
NETO

3

BEDROOMS

B

ENERGY CLASS





multi level house

ABEL 156

In combination with a wooden roof and a white facade, with its content and layout, this floor is ideal for a weekend house, and it is adorned with two terraces on both sides so that you get a perfect view of the surroundings.

156 M²

BRUTO

131 M²

NETO

4

BEDROOMS

A

ENERGY CLASS





multi level house

ABEL 161

The three-room house 161 is a leader in the typology of a traditional family house. The narrow-width balcony and the triangular roof house briefly describe what awaits you on your return to a warm home, if you choose this house.

161 M²

BRUTO

103 M²

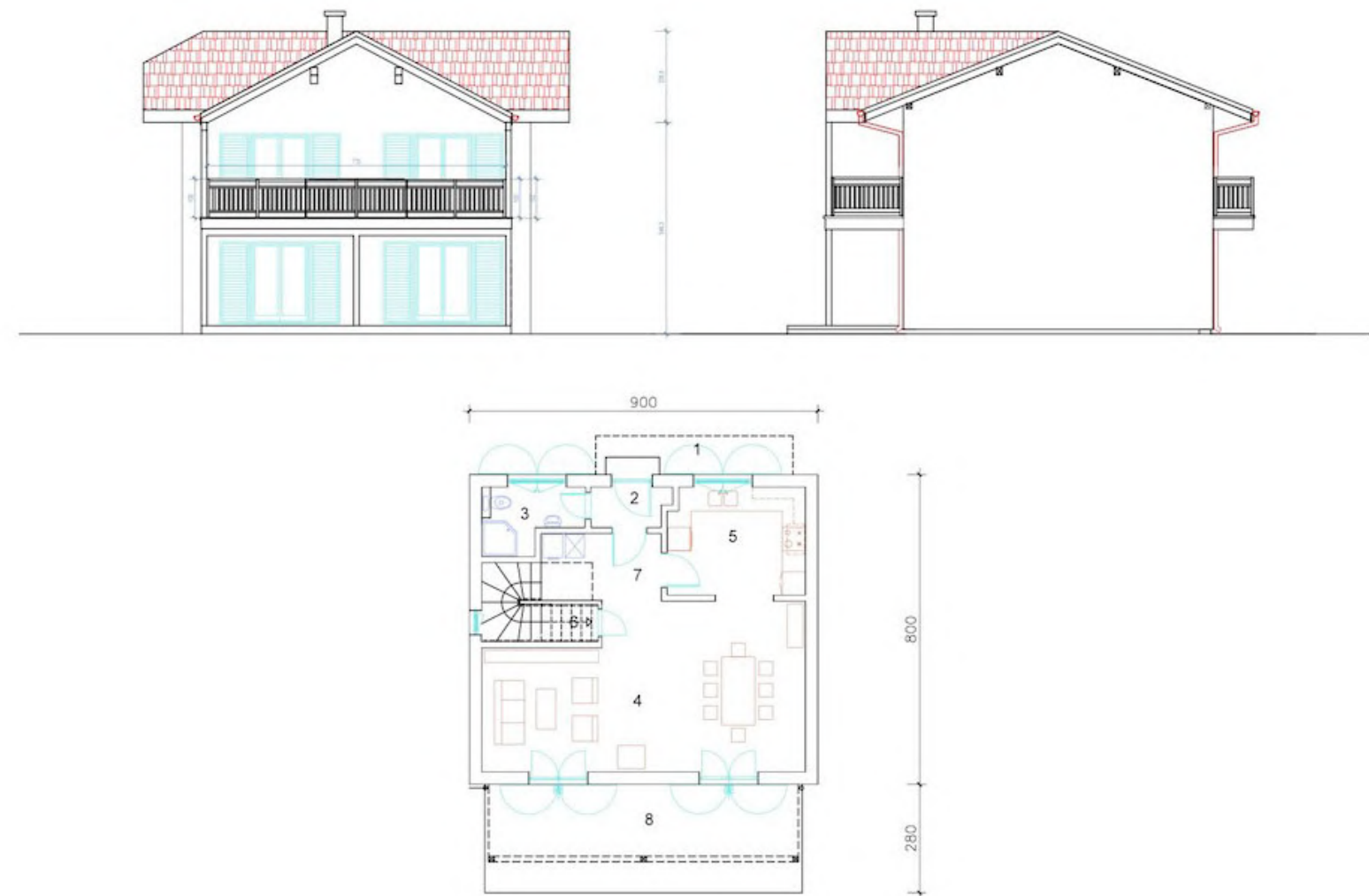
NETO

3

BEDROOMS

B

ENERGY CLASS





multi level house

ABEL 171

The three-room family house 171 will give your home a note of charm and elegance, and the content will respond to modern propositions. With a regular rectangular floor plan, prominent eaves, and terrace, the family house 171 impressively incorporates elements of a traditional urban villa.

171 M²

BRUTO

131 M²

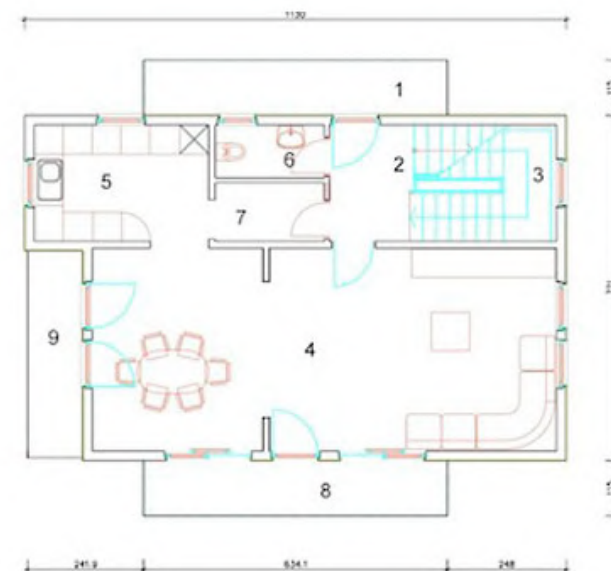
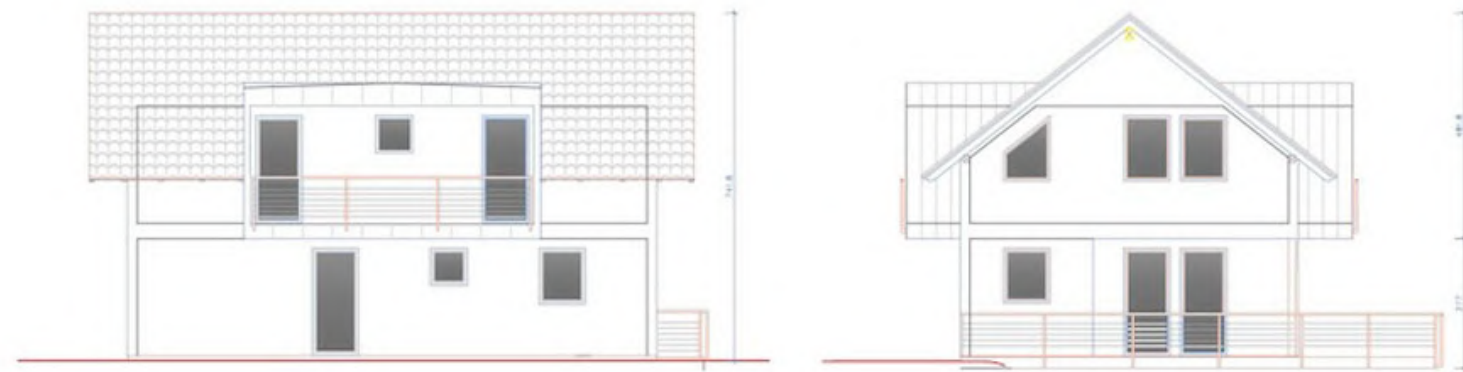
NETO

3

BEDROOMS

A

ENERGY CLASS





multi level house

ABEL 212

This modern floor offers both functionality and comfort. Daylight illuminates the rooms of the house through large windows on several sides. The simplicity of this house allows the buyer to choose the external appearance, such as a facade made of stone or wood.

212 M²

BRUTO

162 M²

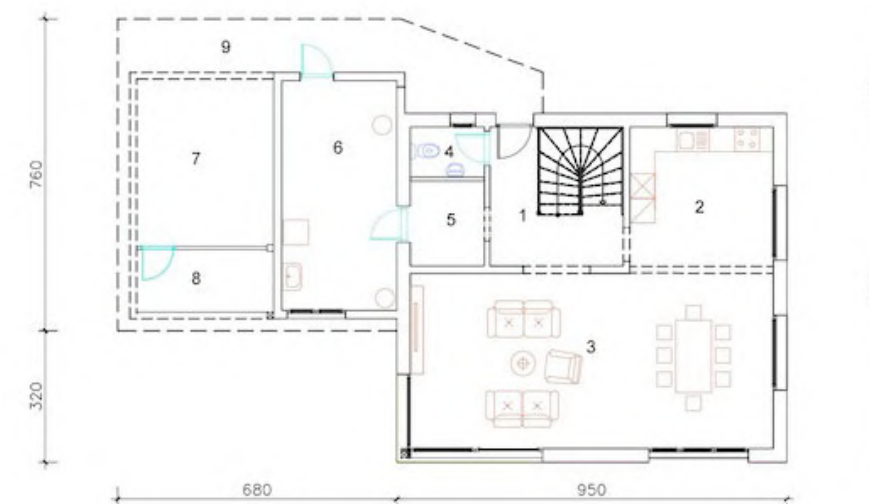
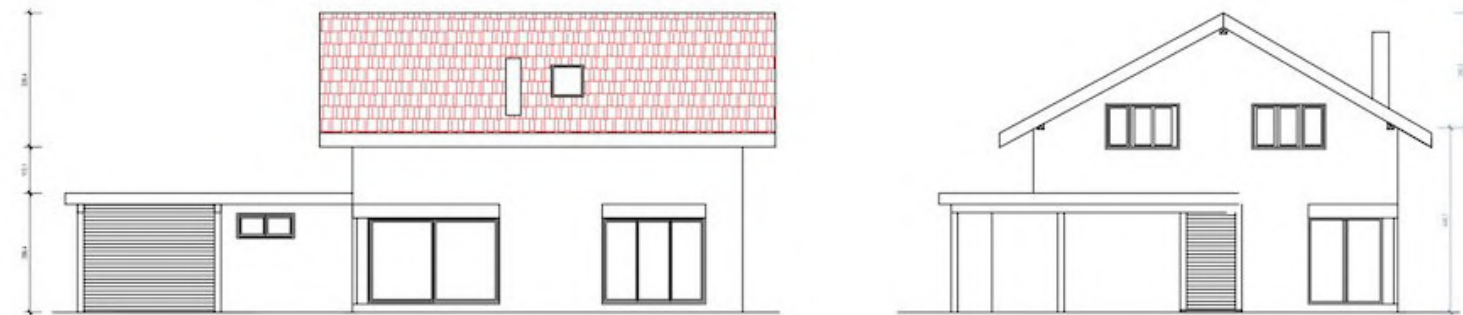
NETO

4

BEDROOMS

A+

ENERGY CLASS





multi level house

ABEL 226

The cubic architecture of the family house 226 embodies three rooms in a modern floor plan. With its design, the 226 house is a representative of the esteemed modern architecture, which is manifested in clean lines, the intertwining of the cube, and the drawing of the surfaces on the facade.

226 M²

BRUTO

176 M²

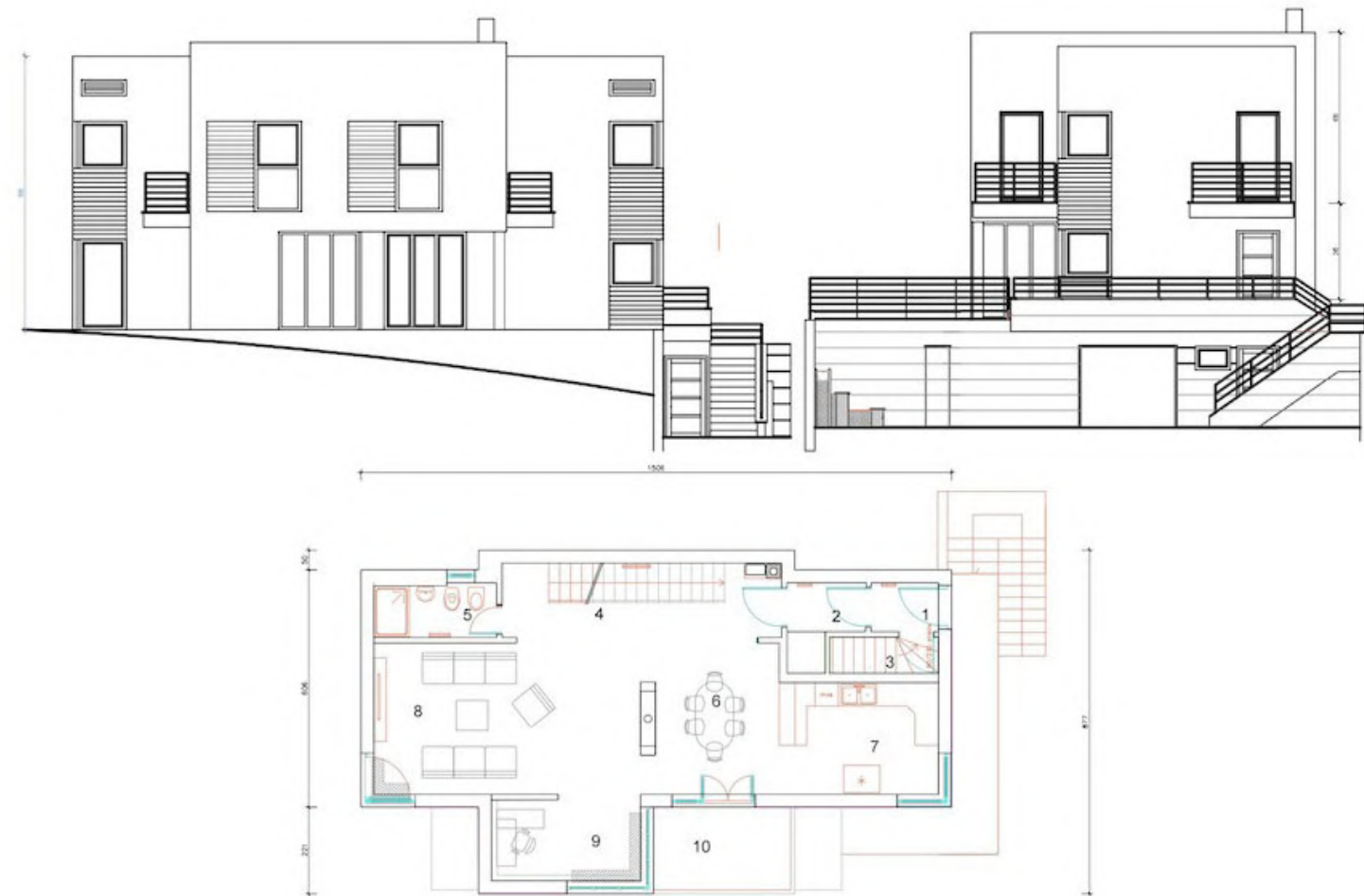
NETO

3

BEDROOMS

A

ENERGY CLASS





multi level house

ABEL 279

Immediately upon entering a house like this, a large amount of daylight is noticeable, which makes each room very comfortable to stay. This is especially pronounced in the combined space of the living room, dining room, and kitchen, which covers over 279 square meters. Four upstairs rooms and two large bathrooms make the two-story one of the most spacious Promo residential homes. Its exterior is especially attractive with a large porch and terrace. The characteristic of this house is an interesting solution to the roof construction and a wooden facade where the buyer chooses the color.

279 M²

BRUTO

222 M²

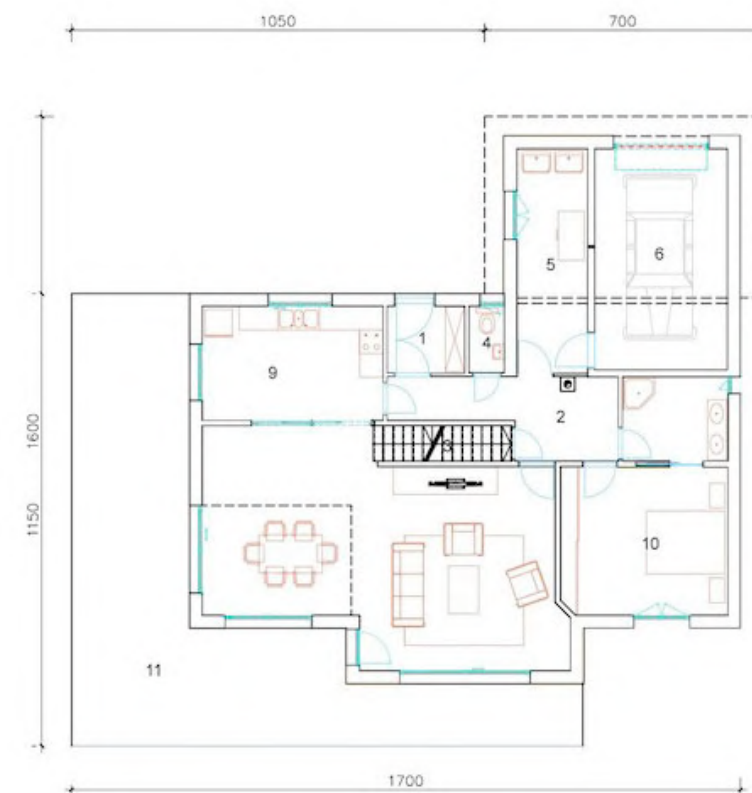
NETO

4

BEDROOMS

A

ENERGY CLASS





multi level house

ABEL 314

The maximum openness of the living spaces of the five-room house 314 emphasizes the togetherness of its users. 314 is a prefabricated house of subtle contrast – the openings of anthracite frames in a dynamic game are highlighted on the white facade. Contrast is also given in the design of the facade – and open intimate façade and a more closed entrance – it will encourage you to surround the house to understand its story.

314 M²

BRUTO

177 M²

NETO

5

BEDROOMS

B

ENERGY CLASS





multi level house

ABEL 112

ABEL-112 house contains three bedrooms, a bathroom, and a large living room with a kitchen. The high ceiling in the living area gives this house extra freshness and a feeling of comfort.

112 M²

BRUTO

101 M²

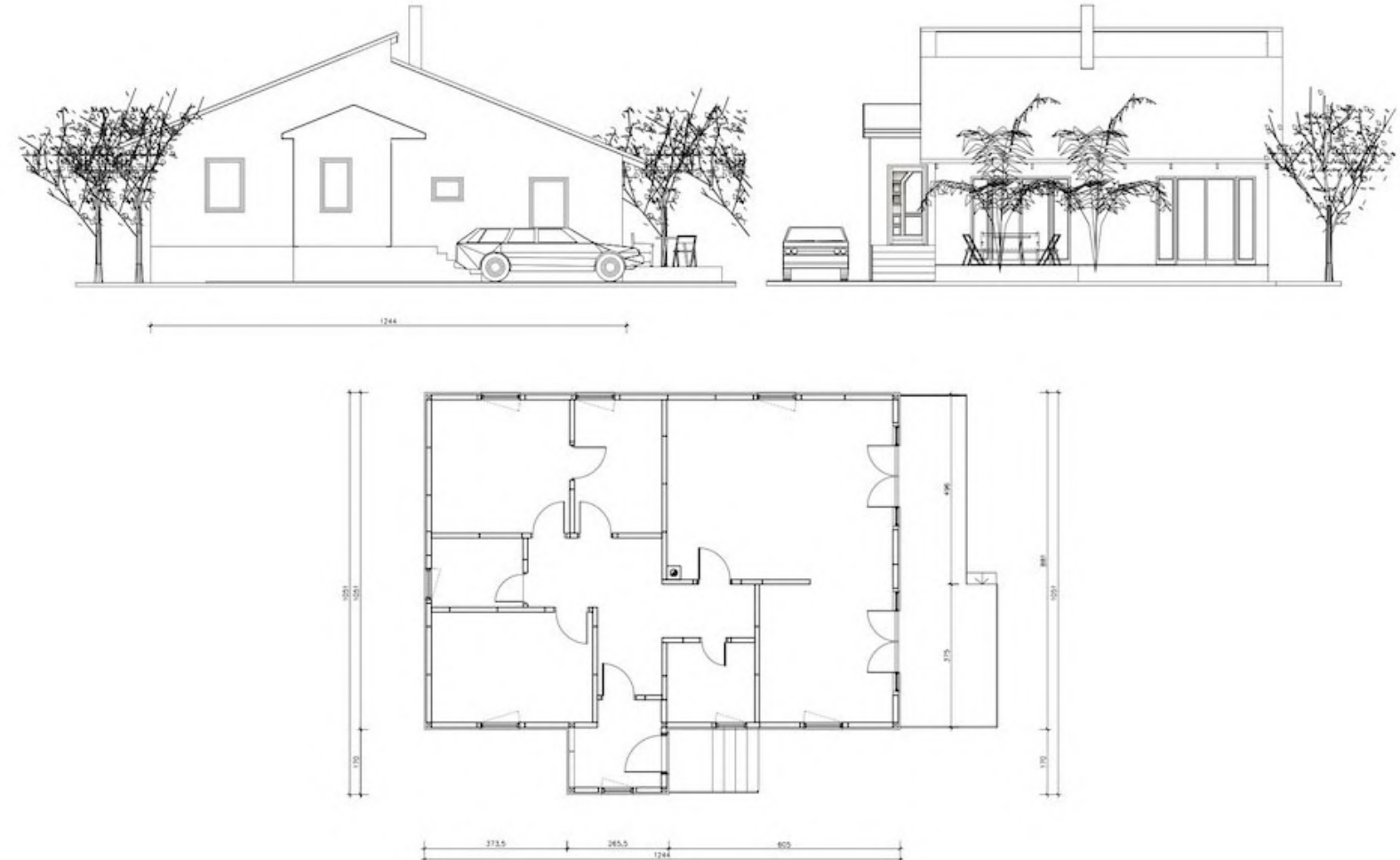
NETO

3

BEDROOMS

C

ENERGY CLASS





multi level house

ABEL 126

ABEL-126 House126 with an interesting roof offers a choice of high ceilings in the living room and kitchen. The spacious yard on the sunny side, in addition to a nice place to rest, represents a special exit to the yard.

126 M²

BRUTO

92 M²

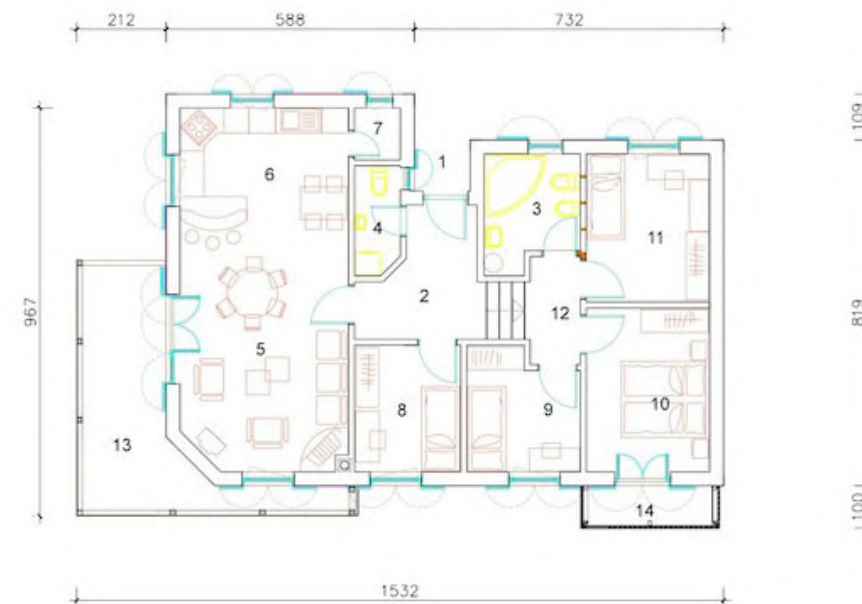
NETO

4

BEDROOMS

B

ENERGY CLASS





multi level house

ABEL 153

ABEL-153 Wooden house of a simple shape with perfectly used and functional space, with special care for the warmth of the family home as well as the real warmth on cold days.

153 M²

BRUTO

129 M²

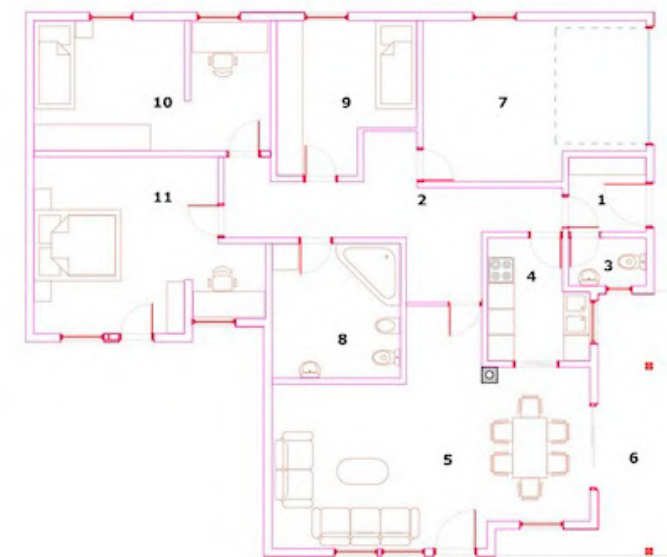
NETO

3

BEDROOMS

B

ENERGY CLASS





multi level house

ABEL-160

ABEL-160 The spacious house 160 follows the basic requirement of the attractiveness of external and internal forms deprived of kitschy details that would disrupt the functional use of space.

160 M²

BRUTO

123 M²

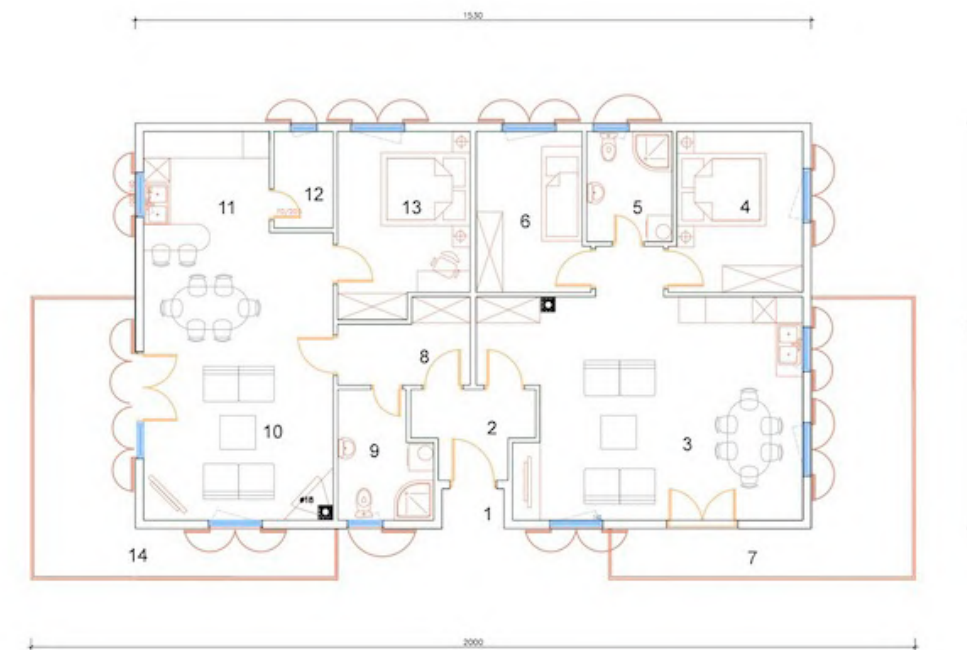
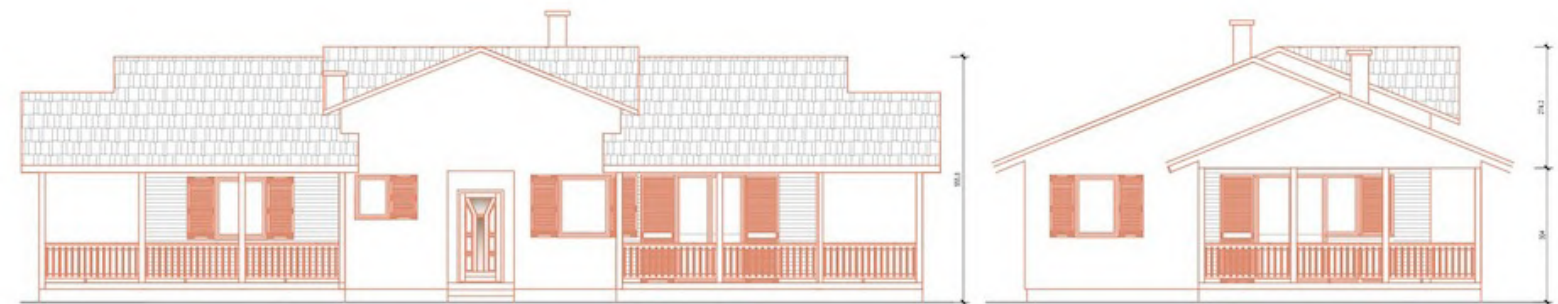
NETO

3

BEDROOMS

B

ENERGY CLASS





multi level house

ABEL 163

ABEL-163 Family house 163 is a three-room house with a simple body and clean lines. 163 is for those who prefer classic architectural forms in which the achievements of modern construction are skilfully and discreetly inserted.

163 M²

BRUTO

130 M²

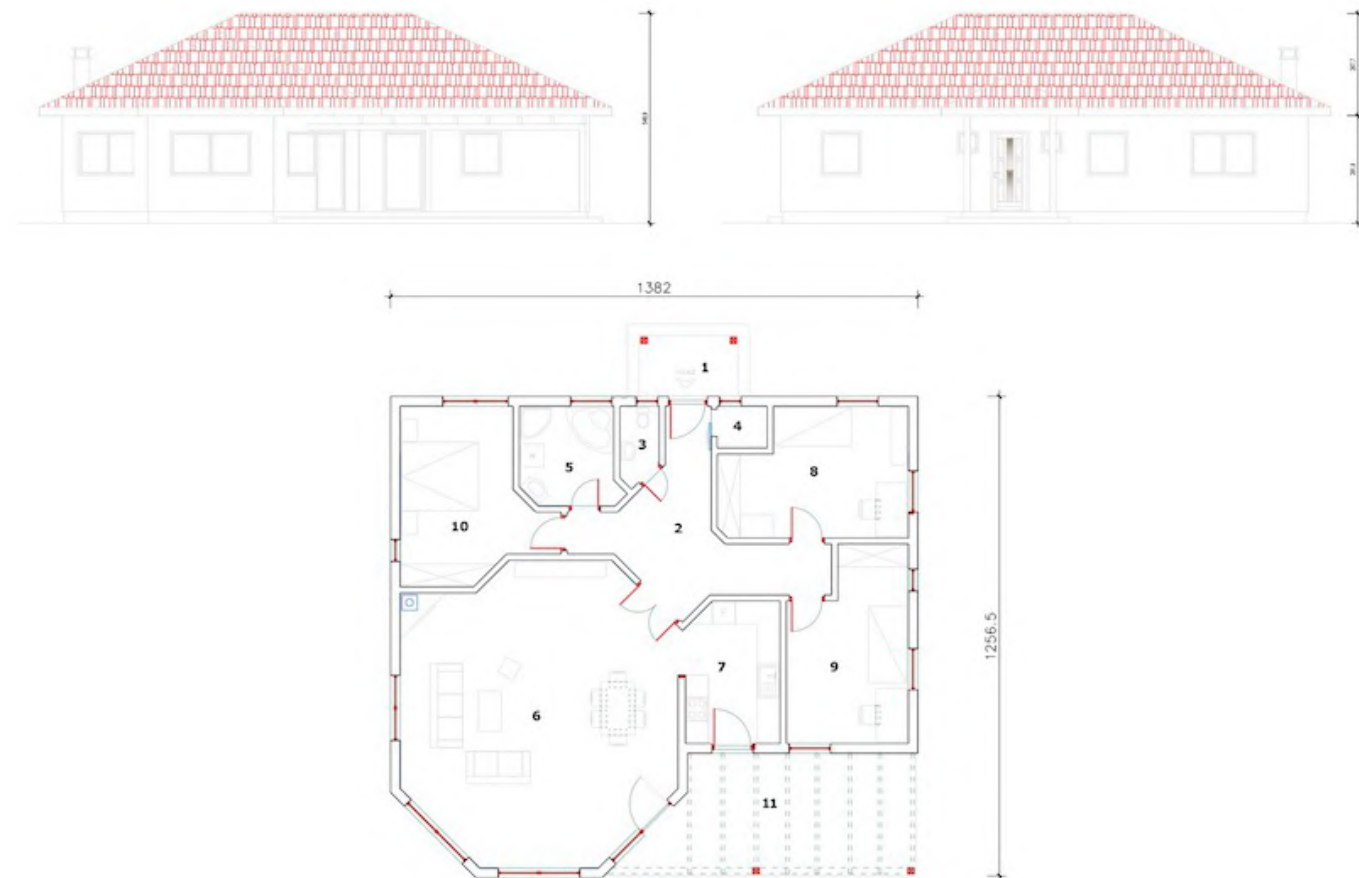
NETO

3

BEDROOMS

B

ENERGY CLASS





luxury homes

ABEL LUX 319

319 M²

BRUTO

4

BEDROOMS

A+

ENERGY CLASS





luxury homes
ABEL LUX 160

160 M²

BRUTO

2

BEDROOMS

A+

ENERGY CLASS





luxury homes

ABEL LUX 234

234 M²

BRUTO

4

BEDROOMS

A+

ENERGY CLASS





luxury homes
ABEL LUX 248

248 M²

BRUTO

4

BEDROOMS

A+

ENERGY CLASS





luxury homes

ABEL LUX 324

324 M²

BRUTO

3

BEDROOMS

A+

ENERGY CLASS





luxury homes
ABEL LUX 380

380 M²

BRUTO

4

BEDROOMS

A+

ENERGY CLASS





luxury homes

ABEL LUX 400

400 M²

BRUTO

5

BEDROOMS

A+

ENERGY CLASS





luxury homes
ABEL LUX 428

428 M²

BRUTO

4

BEDROOMS

A+

ENERGY CLASS





modular office **WORKSPACE**

Office space delivered to your door

One thing is for sure and that's that work from home will become the way of working. With that, the demand for highly efficient, smart office space is growing. Our modular office solution are great.





modular office

A modular office is an economical and convenient way to increase space for your business.



glued elements for windows

Scantlings of 2 to 6 layers available in any kind of wood. Glued for both internal and external use. Resilient to water, temperature and other weather effects.



we offer

OAK PANELS

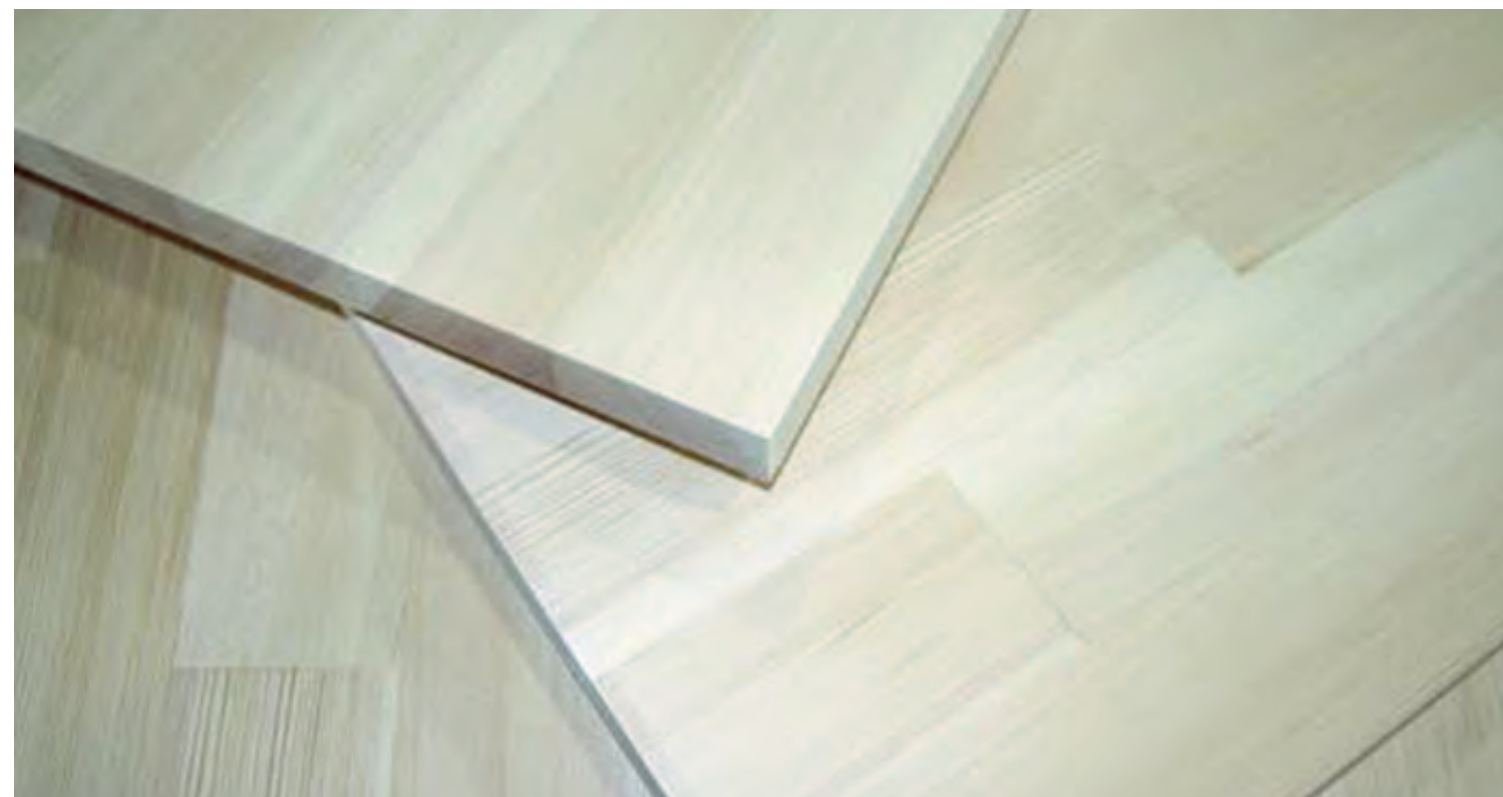
Oak panels have a very wide purpose and are most often used in the manufacture of stairs. Solid boards can be made of various types of wood:

- *oak*
- *beech*
- *walnut*
- *spruce*

They are used for steps, stairs (wood for stairs, surfaces for stairs), workbenches, pieces of furniture, etc.

glued elements for staircases

Elements for building efficient wooden stairs. Available in all kinds of wood.



ABEL HAUS 1884

OUR TEAM

The combination of experience and youth is what makes our team victorious.

We are always one step ahead of others in the application of innovative ideas and approach to each of our investors as if it were our only one.



manager

MATO MARIJANOVIC

Mobile: 0172-1700833 | Email: mmariano@abelhaus.com

After 50 years in construction business Mr. Marijanovic has built many family homes and has run large construction projects.



president of the Board
MARIO ABEL

Mobile: +385955339261 | Email: mabel@abelhaus.com

Mr. Abel is a seasoned business leader. His vast experience spans from construction, real-estate, investment and metals.



marketing director
BILJANA ABEL

Mobile: +14408405077 | Email: babel@abelhaus.com

With over 15 years of experience in marketing and business development Mrs. Abel heads up our marketing side of business.



*managing director -
Hungary*

ATTILA FARKAS

Mobile: + 36707748455 | Email: afarkas@abelhaus.com

With over 25 years of experience in business development, and strategic planning. Mr. Farkas heads up our business in Hungary.



*managing director -
Croatia, BiH*

**JOSIP MARKIC,
MAG.OEC.**

**Mobile: +385996539173 (CRO) +38763222279 (BIH)
Email: jmarkic@abelhaus.com**

With over 12 years of experience in business development, and strategic planning. Mr. Markic heads up our business in Croatia and BiH.

STRATEGIC GOALS

To successfully achieve our mission and vision, we have defined strategic goals that we are committed to:



Quality of workmanship
as an imperative



Sustainable development,
economy, and energy efficiency
as a high-ranking factor



Full compliance with
obligations to investors,
partners, and suppliers



Investor confidence and
satisfaction as the ultimate goal
and the best generator of new
business opportunities



Desirable business partner in
the construction of private and
public buildings



Long-term partnership with
quality suppliers



Contact information:



+49 172-1700833

Contact us by phone during our working hours.



info@abelhaus.com

At AbelHaus you can always count on our support.



Muller Strasse 345,
Frankfurt 60306, Germany