



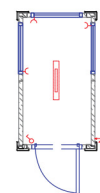
## MOBILNA PROSTORNA RJEŠENJA

## Standardni kontejner - karakteristike:

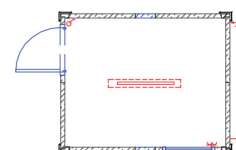
- Jednostavna i brza implementacija
- Sastavljen od fiksnih zidova ili panela
- Moguća isporuka s unutarnjom visinom od 2.330 mm ili 2.500 mm
- Vanjska izrada: profilirani pocinčani lim - dostupan u svim bojama prema RAL standardu
- Unutarnja obrada: iverica (svijetli hrast ili bijela) ili lim u boji
- Pod: iverica ili vodonepropusna šperploča prekrivena sivim PVC slojem
- Izolacija: mineralna vuna
  - pod: 60-100 mm
  - zidovi: 60 mm
  - krov: 100 mm
- 1 vrata: 875 x 2.000 mm, siva
- Prozori: plastični bijeli okviri s izolacijskim staklom te integriranim roletama i nagibnim/okretnim mehanizmom
- Električne instalacije:
  - 1 razvodna kutija, 2 puta rasvjeta (2 x 36 W)
  - Priklučci na napon od 230V
  - 400 V / 5-polni 3 x 32 A vanjski priključak u skladu s CEE normama, ugrađen u nosač krova, spojiv



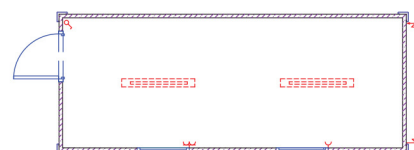
MB05



MB10

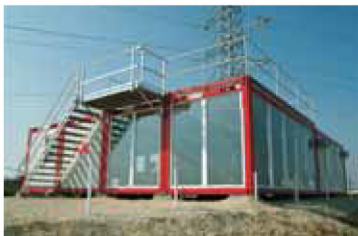
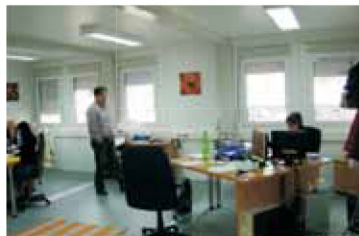


MB20



## Kontejnerski sklopovi

Kontejneri mogu biti sastavljeni zajedno, čineći tako kontejnerske module visine do 3 kata, uključujući unutarnje prilagodbe prema individualnim potrebama klijenata.



Detaljne tehničke specifikacije naših proizvoda možete pronaći na [www.abelhaus.com](http://www.abelhaus.com)

Tip	Izvana (mm)			Iznutra (mm)			
	D	Š	V	D	Š	V	
MB05	1.400	2.438	2.591	1.200	2.238	2.330	620
MB08	2.438	2.438	2.591	2.235	2.238	2.330	720
MB10	2.991	2.438	2.591	2.791	2.238	2.330	1.130
MB16	4.880	2.438	2.591	4.680	2.238	2.330	1.620
MB20	6.058	2.438	2.591	5.858	2.238	2.330	1.980
MB24	7.325	2.438	2.591	7.125	2.238	2.330	2.390
MB30	9.125	2.438	2.591	8.925	2.238	2.330	2.890

## MO20 podijeljeni uredsko-skladišni kontejner

### Karakteristike uredskog prostora:

- Izoliran
- 1 PVC prozor s nagibnim/okretnim mehanizmom, s rešetkama s vanjske strane
- 1 rasvjeta (2 x 36 W)

### Karakteristike skladišnog prostora:

- Ugrađene čelične police
- Zidni nosači za alat
- 1 stropna svjetiljka 60 W sa zaštitnom rešetkom
- 1 priključak na napon 230 V

## MB25 - karakteristike:

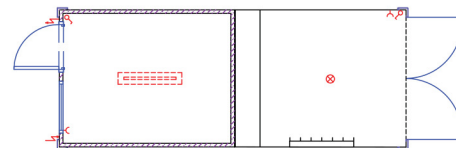
- Hodnik kao zaštita od vjetra
- 1 WC školjka
- 1 umivaonik
- 2 puta rasvjeta (1 x 36 W)
- 2 puta rasvjeta (2 x 36 W)
- 1 el. grijalica snage 0,5 kW

## MB26 - karakteristike:

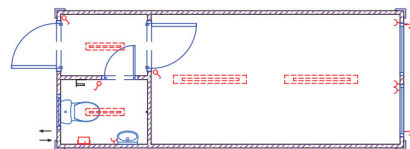
- Hodnik kao zaštita od vjetra
- 1 tuš kabina
- 1 WC školjka
- 1 umivaonik
- 1 el. bojler od 80 L
- 2 puta rasvjeta (1 x 36 W)
- 1 puta rasvjeta (2 x 36 W)
- 1 el. grijalica snage 0,5 kW



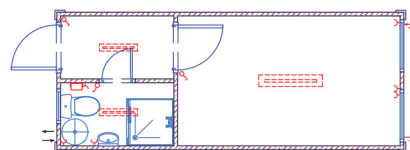
MO20



MB25



MB26



## Dodaci

### Vanjski:

Stubišta, podesti, terase, sekundarni krov, nadstrešnice, dekorativne obloge, rešetke za vrata i prozore, panoramski prozori i atike.



### Unutarnji:

Grijalica, klima, mini kuhinja, namještaj i garderobni ormari.



Detaljne tehničke specifikacije naših proizvoda možete pronaći na [www.abelhaus.com](http://www.abelhaus.com)

Tip	Izvana (mm)			Iznutra (mm)			
	D	Š	V	D	Š	V	
MB25	6.058	2.438	2.591	5.858	2.238	2.330	2.150
MB26	6.058	2.438	2.591	5.858	2.238	2.330	2.220
MO20	6.058	2.438	2.591				2.400
└ Uredski				2.930	2.238	2.330	1.200
└ Skladišni				2.930	2.350	2.376	1.200

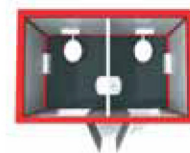
Proizvodi s 2. i 3. stranice isporučivi su i s visinom od 2.500 mm (iznutra)

## MW05 - karakteristike:

- 2 WC kabine
- 2 umivaonika
- 2 ispušna ventilatora
- 2 sušila za ruke
- 2 vrata sa zamagljenim staklom
- 2 puta rasvjeta (1 x 36 W)
- 2 el. grijalice snage 0,5 kW



MW05

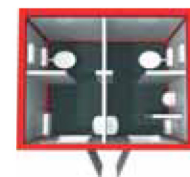


## MW10 - karakteristike:

- 2 WC kabine
- 1 pisoar s pregradom
- 2 umivaonika
- 2 puta rasvjeta (1 x 36 W)
- 2 el. grijalice snage 0,5 kW



MW10



## MW20 - karakteristike:

- 6 WC kabina
- 2 pisoara s pregradama
- 2 dupla umivaonika
- 2 puta rasvjeta (1 x 36 W)
- 1 el. grijalica snage 2,0 kW



MW20

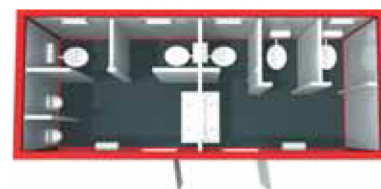


## MW23 - karakteristike:

- 5 WC kabina
- 2 pisoara s pregradama
- 2 dupla umivaonika
- Odvojeni muški/ženski prostor sa zasebnim ulazima
- 2 puta rasvjeta (1 x 36 W)
- 1 el. grijalica snage 2,0 kW



MW23



## MZ20 - karakteristike:

- 6 tuš kabina
- 2 dupla umivaonika
- 1 el. bojler od 300 L
- 2 puta rasvjeta (1 x 36 W)
- 1 el. grijalica snage 2,0 kW



MZ20



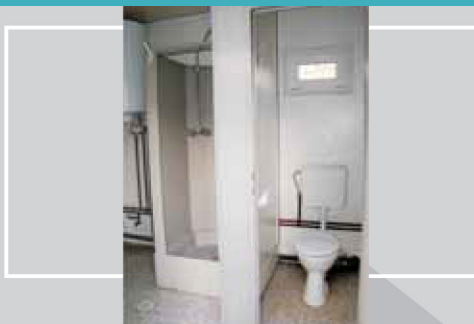
Prikazi su ilustrativni

Detaljne tehničke specifikacije naših proizvoda možete pronaći na [www.abelhaus.com](http://www.abelhaus.com)

Tip	Izvana (mm)			Iznutra (mm)			
	D	Š	V	D	Š	V	
MW05	1.400	2.438	2.591	1.200	2.238	2.330	720
MW10	2.991	2.438	2.591	2.791	2.238	2.330	1.440
MW20	6.058	2.438	2.591	5.858	2.238	2.330	2.760
MW23	6.058	2.438	2.591	5.858	2.238	2.330	2.690
MZ20	6.058	2.438	2.591	5.858	2.238	2.330	2.520

## MS10 - karakteristike:

- 1 tuš kabina
- 1 WC kabina
- 1 pisoar s pregradom
- 1 umivaonik
- 1 el. bojler od 80 L
- 2 puta rasvjeta (1 x 36 W)
- 2 el. grijalice snage 0,5 kW
- 1 ispušni ventilator

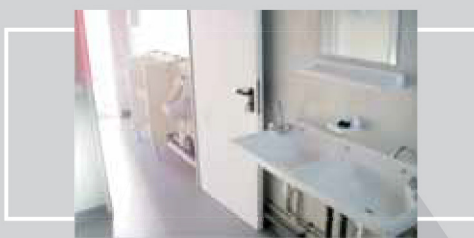


MS10

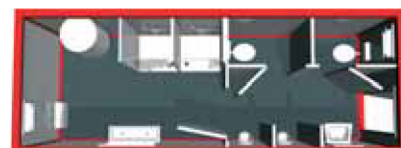


## MS20 - karakteristike:

- 2 tuš kabine
- 2 WC kabine
- 2 pisoara s pregradama
- 1 umivaonik
- 1 dupli umivaonik
- 1 el. bojler od 150 L
- 2 puta rasvjeta (1 x 36 W)
- 2 el. grijalice snage 0,5/2,0 kW
- 1 ispušni ventilator

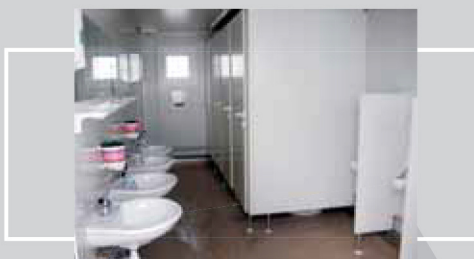


MS20



## MS22 - karakteristike:

- 2 tuš kabine
- 2 WC kabine
- 1 pisoar
- 2 dupla umivaonika
- Odvojeni muški/ženski prostor sa zasebnim ulazima
- 1 el. bojler od 150 L
- 4 puta rasvjeta (1 x 36 W)
- 2 + 2 el. grijalice snage 0,5 kW i 2,0 kW



MS22



## MS28 - karakteristike:

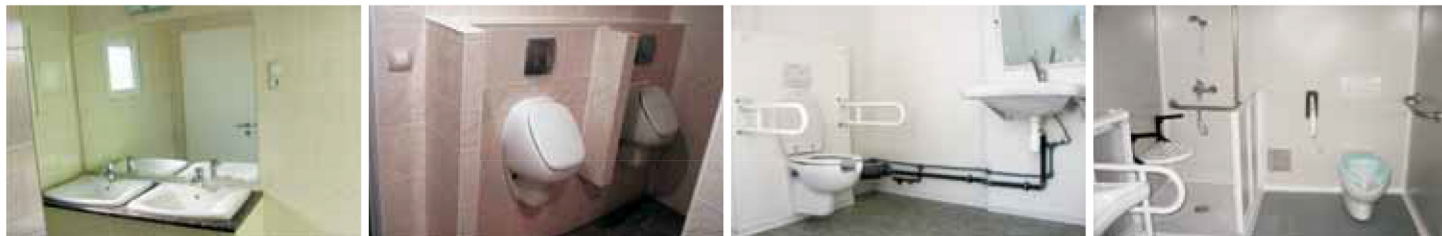
- 3 tuš kabine
- 3 WC kabine
- 2 pisoara s pregradama
- 1 umivaonik
- 1 dupli umivaonik
- 1 el. bojler od 200 L
- 2 puta rasvjeta (2 x 36 W)
- 2 el. grijalice snage 0,5/2,0 kW



MS28



VIP sanitarni prostori ili sanitarni prostori za osobe s invaliditetom mogu se prilagođavati prema potrebama kupaca



Detaljne tehničke specifikacije naših proizvoda možete pronaći na [www.abelhaus.com](http://www.abelhaus.com)

Tip	Izvana (mm)			Iznutra (mm)			
	D	Š	V	D	Š	V	
MS10	2.991	2.438	2.591	2.791	2.238	2.330	1.560
MS20	6.058	2.438	2.591	5.858	2.238	2.330	2.560
MS22	6.058	2.438	2.591	5.858	2.238	2.330	2.460
MS28	6.058	2.438	2.591	5.858	2.238	2.330	2.640

Proizvodi s 4. i 5. stranice isporučivi su i s visinom 2.500 mm (iznutra)

## MX8, 10, 20, 40 i 45HC - karakteristike:

- Dvostruka čelična vrata
- 2 zasunske šipke sa zaštitom brave
- 4 zasunske šipke u slučaju ISO brodskih kontejnera
- 2 utora za viličare
- 4 ventilacijska otvora

## Prednosti:

- Sigurno skladištenje (visoka otpornost na vjetar i vodu, mogućnost zaključavanja)
- Lako rukovanje (manipulacija moguća i viličarem)
- Rješenje za uštedu prostora (slaganje na kat)

## MX20E - karakteristike:

- 2 zidne svjetiljke 60 W sa zaštitnom rešetkom
- 400 V / 5-polni 3 x 32 A vanjski priključak u skladu s CEE normama
- 1 priključak na napon od 230 V

## MI20 - karakteristike:

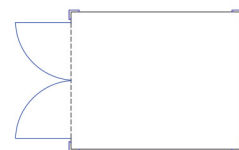
- Izolirani krov, 100 mm
- PVC obloga poda
- 82 m fiksiranih čeličnih polica za pohranu dokumenata
- 2 puta rasvjeta (2 x 36 W)
- 4 ventilacijska otvora sa zaštitom od štetočina
- 1 radni stol sa svjetiljkom
- 1 priključak na napon od 230 V

## MK10/MK20 - karakteristike:

- Sigurno skladištenje opasnih materijala i proizvoda
- Opremljen sigurnosnim, pomičnim pocinčanim rešetkastim dnom
- Dvostruka čelična vrata
- 4 velika ventilacijska otvora sa zaštitom od štetočina



MX10



MX20



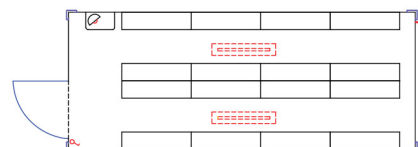
MX20E



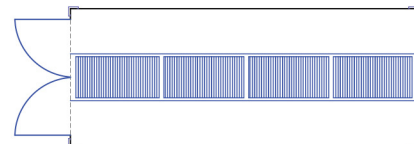
MX40



MI20



MK20



Detaljne tehničke specifikacije naših proizvoda možete pronaći na [www.abelhaus.com](http://www.abelhaus.com)

Tip	Izvana (mm)			Iznutra (mm)			
	D	Š	V	D	Š	V	
MX8	2.438	2.000	2.265	2.291	1.900	2.103	850
MX10	2.991	2.438	2.591	2.850	2.350	2.390	1.150
MX20	6.058	2.438	2.591	5.911	2.350	2.390	1.750 / 2.250
MX40	12.192	2.438	2.591	11.998	2.350	2.390	3.780
MX45HC	13.716	2.438	2.896	13.556	2.353	2.695	4.950
MI20	6.058	2.438	2.591	5.911	2.338	2.340	1.980

## MR20/MR40 - karakteristike:

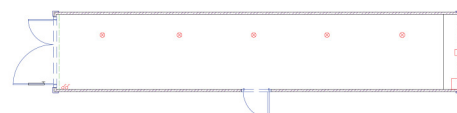
- Pogodan za skladištenje svježe, zamrznute i paletizirane robe
- Automatsko održavanje temperature između -25°C i +25°C
- Asimetrično podijeljena dupla vrata
- Panik brava (20')/Panik vrata (40')
- Toplinska izolacija, PVC trakasta zavjesa
- Prenosiva rampa
- Štedljivi Daikin rashladni sustav
- Pohranjivanje digitalnih podataka
- 3/5 stropnih svjetiljki sa zaštitnom rešetkom
- Jedan vanjski priključak na napon od 400 V za rashladnu jedinicu
- Jedan vanjski priključak na napon od 230 V za rasvjetu



MR20



MR40

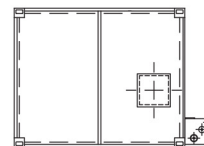


## MT10, MT20 septički spremnik - karakteristike:

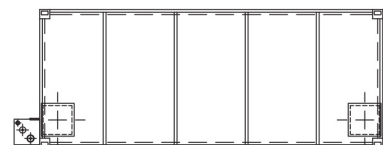
- Pogodno za područja bez odvodne infrastrukture
- Ugrađuje se ispod sanitarnog kontejnera
- Jednostavno spajanje sa sanitarnim kontejnerom
- Neto kapacitet: 5/10 m<sup>3</sup>
- Indikator razine popunjenosti
- Pražnjenje u zatvorenom sustavu
- 2 otvora za čišćenje
- Koristi se u kombinaciji sa stubama



MT10



MT20

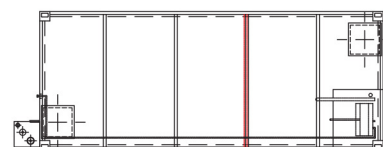


## MVT20 odvodno-dovodni spremnik - karakteristike:

- Neto zapremina: 4 m<sup>3</sup> spremnik za vodu, 6 m<sup>3</sup> septički spremnik
- Pumpa za vodu 1,1 kW



MVT20

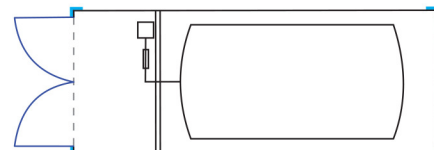


## MF10 spremnik za dizel - karakteristike:

- 10 m<sup>3</sup> čelični horizontalni spremnik za skladištenje dizela
- Dozator ili mjerac protoka sa zapornim ventilom (mlaznica)
- Dvostruka čelična vrata
- Zapremine od 5, 20 ili 30m<sup>3</sup>



MF10



Detaljne tehničke specifikacije naših proizvoda možete pronaći na [www.abelhaus.com](http://www.abelhaus.com)

Tip	Izvana (mm)			Iznutra (mm)			
	D	Š	V	D	Š	V	
MK10	2.991	2.438	2.591	2.831	2.344	2.376	1.350
MK20	6.058	2.438	2.591	5.898	2.344	2.376	2.200
MR20	6.058	2.438	2.591	5.427	2.292	2.310	3.260
MR40	12.192	2.438	2.591	11.560	2.292	2.310	4.650
MT10	2.991	2.438	700				800
MT20	6.058	2.438	700				1.800
MVT20	6.058	2.438	700				1.900
MF10	6.058	2.438	2.591				
MF30	12.192	2.438	2.591				

## Izdvojene reference:



### Projektni ured



### Dječji vrtić / Škola



### Izložbeni prostor



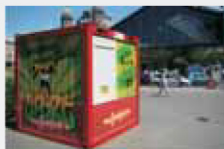
### Kontejneri za festivale



### Trgovina



### Izložbeni štand



### Uredski prostori



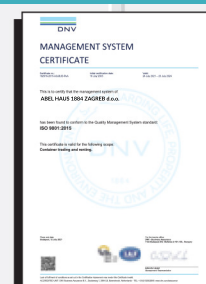
### Kontrolna zgrada na ulazu



## Stručna prodaja i najam kontejnera



**ABELHAUS** 1884  
MODULAR HOME MANUFACTURER





# PRODUCT CATALOGUE



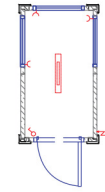
## MOBILE SPATIAL SOLUTIONS

# Office containers

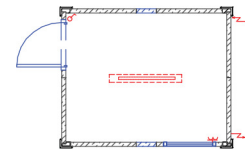
- Standard containers – characteristics:
- Quick and easy implementation
  - AssStandard containers – characteristics:
  - Quick and easy implementation
  - Assembled from fixed walls and panels
  - Possible delivery with internal height of 2.330mm or 2.500mm
  - Exterior design- profiled galvanized sheet metal - available in all colors according to RAL standard
  - Interior design: plywood (light oak or white) or sheet metal in color
  - Floor: plywood or waterproof plywood covered with grey PVC layer
  - Isolation: mineral wool
  - floor: 60-100mm
  - wall: 60mm
  - roof: 100mm
  - 1 door: 875x2000mm, grey
  - Windows: plastic white framework with isolation glass and integrated blinds and tilt/agile mechanism
  - Electric installation:
  - 1 distribution box, 2 lightings (2x36W)
  - connectors for 230V
  - 400V/5-pole 3x32 A exterior connector according to CEE norms, built-in roof rack, connective
  - emblem from fixed walls and panels
  - Possible delivery with internal height of 2.330mm or 2.500mm
  - Exterior design- profiled galvanized sheet metal - available in all colors according to RAL standard
  - Interior design: plywood (light oak or white) or sheet metal in color
  - Floor: plywood or waterproof plywood covered with grey PVC layer
  - Isolation: mineral wool
  - floor: 60-100mm
  - wall: 60mm
  - roof: 100mm
  - 1 door: 875x2000mm, grey
  - Windows: plastic white framework with isolation glass and integrated blinds and tilt/agile mechanism
  - Electric installation:
  - 1 distribution box, 2 lightings (2x36W)
  - connectors for 230V
  - 400V/5-pole 3x32 A exterior connector according to CEE norms, built-in roof rack, connective



MB05



MB10

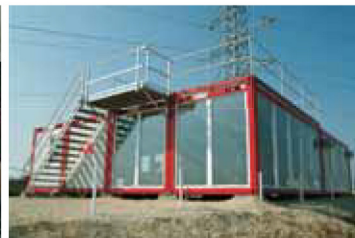
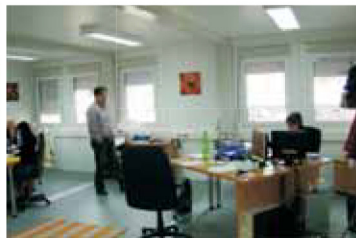


MB20



## Container assembly

The containers can be connected together, so they make container modules in height of 3 floors, including interior adjustments for individual needs of clients.



You can find detailed technical specifications of our products [www.abelhaus.com](http://www.abelhaus.com)

Type	Exterior (mm)			Interior (mm)			
	L	W	H	L	Š	V	
MB05	1.400	2.438	2.591	1.200	2.238	2.330	620
MB08	2.438	2.438	2.591	2.235	2.238	2.330	720
MB10	2.991	2.438	2.591	2.791	2.238	2.330	1.130
MB16	4.880	2.438	2.591	4.680	2.238	2.330	1.620
MB20	6.058	2.438	2.591	5.858	2.238	2.330	1.980
MB24	7.325	2.438	2.591	7.125	2.238	2.330	2.390
MB30	9.125	2.438	2.591	8.925	2.238	2.330	2.890

## M020 divided office-storage container

### Characteristics of office space:

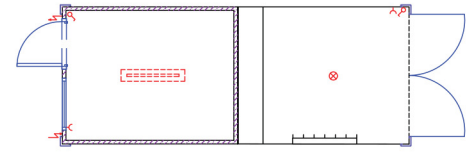
- Isolated
- 1 PVC window with tilt/agile mechanism, with exterior grating
- 1 lighting (2x36W)

### Characteristics of storage container:

- Built-in steel plates
- Wall carrier for tools
- 1 roof light 60W with protective grating
- 1 connector for 230V

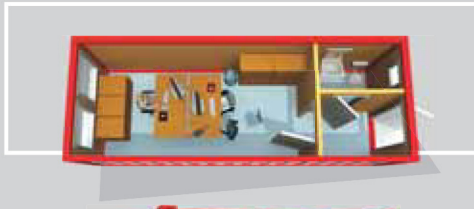


M020

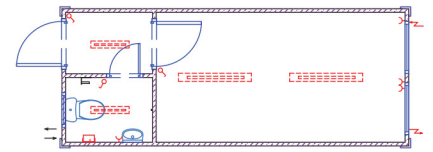


## MB25- characteristics:

- Hall for wind protection
- 1 WC toilet
- 1 sink
- 2x lighting (1x36W)
- 2x lighting (2x36W)
- 1 electrical heater 0,5kW



MB25

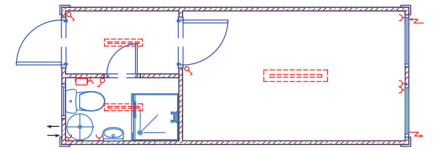


## MB26 - characteristics:

- Hall for wind protection
- 1 toilet
- 1 sink
- 2x lighting (1x36 W)
- 2x lighting (2x36 W)
- 1 electrical heater 0,5 kW



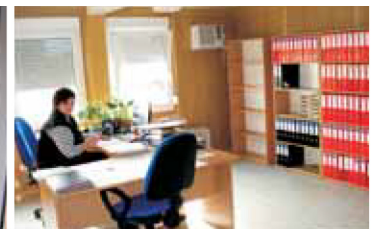
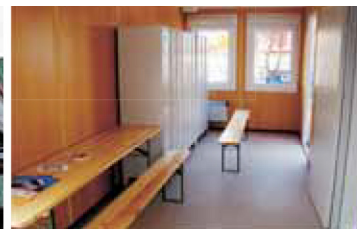
MB26



## Accessories

**Exterior:**  
Staircases, landings, terraces, secondary roofs, canopies, decorative trim, grilles for doors and windows, panoramic windows and attics

**Interior:**  
Heater, air conditioning, mini kitchen, furniture and wardrobe



You can find detailed technical specifications of our products [www.abelhaus.com](http://www.abelhaus.com)

Type	Exterior (mm)			Interior (mm)			
	L	W	H	L	W	H	
MB25	6.058	2.438	2.591	5.858	2.238	2.330	2.150
MB26	6.058	2.438	2.591	5.858	2.238	2.330	2.220
MO20	6.058	2.438	2.591				2.400
└ Uredski				2.930	2.238	2.330	1.200
└ Skladišni				2.930	2.350	2.376	1.200

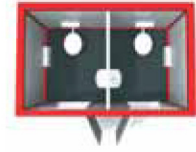
You can order products in the height of 2500 mm from page 2 and 3 (interior)

## MW05 – characteristics:

- 2 WC cabins
- 2 sinks
- 2 vents
- Hand driers
- 2 blurred glass doors
- 2x lighting
- 2 electrical heaters 0,5kW



MW05

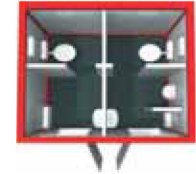


## MW10- characteristics:

- 2 WC cabins
- 1 urinal with divider
- 2 sinks
- 2x lighting (1x36W)
- 2 electrical heaters 0,5kW



MW10



## MW20- characteristics:

- 6 WC cabins
- 2 urinal with divider
- 2 double sinks
- 2x lighting (1x36W)
- 2 electrical heaters 0,5kW



MW20

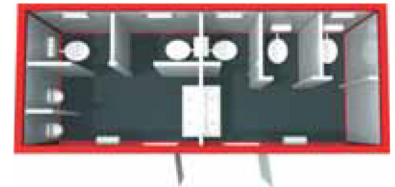


## MW23- characteristics:

- 5 WC cabins
- 2 urinal with dividers
- 2 double sinks
- Divided men/women space with individual entrance
- 2x lighting (1x36W)
- 1 electrical heater 2,0kW



MW23



## M720- characteristics:

- 6 douche cabin
- 2 double sinks
- 1 electrical water heater 300l
- 2x lighting (1x36 W)
- 1 electrical heater 2,0kW



MZ20



Illustrations

You can find detailed technical specifications of our products [www.abelhaus.com](http://www.abelhaus.com)

Type	Exterior (mm)			Interior (mm)			
	L	W	H	L	W	H	
MW05	1.400	2.438	2.591	1.200	2.238	2.330	720
MW10	2.991	2.438	2.591	2.791	2.238	2.330	1.440
MW20	6.058	2.438	2.591	5.858	2.238	2.330	2.760
MW23	6.058	2.438	2.591	5.858	2.238	2.330	2.690
MZ20	6.058	2.438	2.591	5.858	2.238	2.330	2.520

## MS10-characteristics:

- 1 shower cabin
- 1 toilet cabin
- 1 urinal with divider
- 1 sink
- 1 electrical water heater of 150l
- 2x lighting (1x36 W)
- 2 electrical heater of 0,5 kW
- 1 exhaust ventilator



MS10

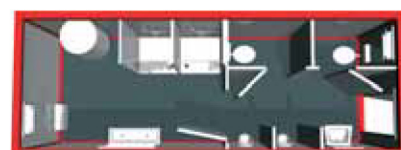


## MS20 – characteristics:

- 2 shower cabins
- 2 toilet cabins
- 2 urinal with divider
- 1 sink
- 1 electrical water heater of 150l
- 2x lighting (1x36 W)
- 2 electrical heater of 0,5/2,0 kW
- 1 exhaust ventilator



MS20

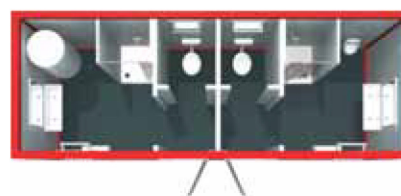


## MS22 – characteristics:

- 2 shower cabins
- 2 toilet cabins
- 1 urinal
- 2 double sinks
- Separate men/women space with separate entrance
- 1 electrical water heater of 150l
- 4x lighting (1x36 W)
- 2 + 2 electrical heater of 0,5 and 2,0 kW

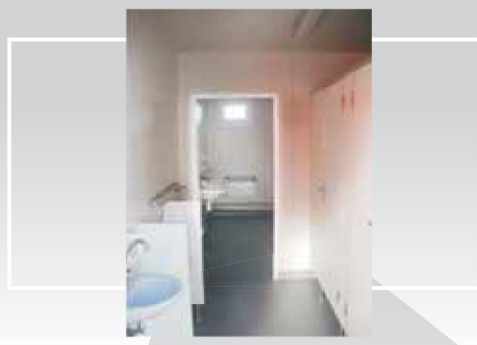


MS22

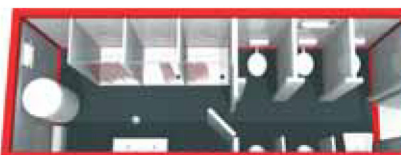


## MS28 – characteristics:

- 3 shower cabins
- 3 toilet cabins
- 2 urinals with dividers
- 1 sink
- 1 double sink
- 1 electrical water heater of 200l
- 2x lighting (2x36 W)
- 2 electrical heaters of 0,5/2,0 kW



MS28



VIP sanitary rooms or sanitary rooms for disabled persons can be adjusted accordant to need of costumers



You can find detailed technical specifications of our products [www.abelhaus.com](http://www.abelhaus.com)

Type	Exterior (mm)			Interior (mm)			
	D	Š	V	D	Š	V	
MS10	2.991	2.438	2.591	2.791	2.238	2.330	1.560
MS20	6.058	2.438	2.591	5.858	2.238	2.330	2.560
MS22	6.058	2.438	2.591	5.858	2.238	2.330	2.460
MS28	6.058	2.438	2.591	5.858	2.238	2.330	2.640

You can order products in the hight of 2500 mm from page 4 and 5 (interior)

## MX8, 10, 20, 40 | 45HC- characteristics:

- Double steel door
- 2 latches rods with lock protection
- 4 latches rods in case of ISO sheep containers
- 2 forklift slots
- 4 ventilation openings

### ADVANTAGES:

- Safe storage (high resistance to wind and water, lockability)
- Easy handling (manipulation also possible with a forklift)
- Solution for space saving (floor stacking)

### MX20E – characteristics:

- 2 wall lights 60W with protective grating
- 400V/5-pole 3x32A exterior connector accordant to CEE norms
- 1 voltage connection of 230V

### MI20 – characteristics:

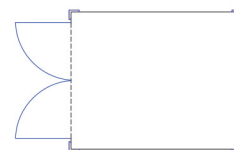
- Isolated roof, 100mm
- PVC floor covering
- 82m fixed steel shelves for document storage
- 2x lights (2x36W)
- 4 ventilation openings with pest protection
- 1 office table with lamp
- 1 voltage connection of 230V

### MK10/MK20 – characteristics:

- Safe storage of dangerous materials and products
- Equipped with secure, movable galvanized mesh bottom
- Double steel door
- 4 large ventilation openings with pest protection



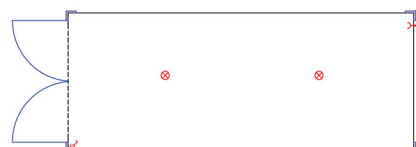
MX10



MX20



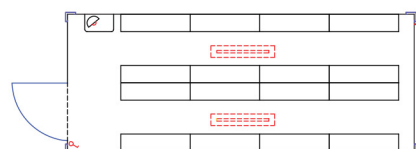
MX20E



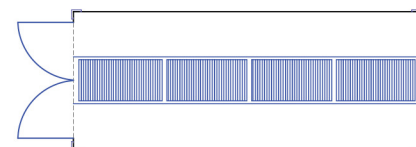
MX40



MI20



MK20



You can find detailed technical specifications of our products [www.abelhaus.com](http://www.abelhaus.com)

Type	Exterior (mm)			Interior (mm)			Height (mm)	Weight (kg)
	L	W	H	L	W	H		
MX8	2.438	2.000	2.265	2.291	1.900	2.103	850	
MX10	2.991	2.438	2.591	2.850	2.350	2.390	1.150	
MX20	6.058	2.438	2.591	5.911	2.350	2.390	1.750	/ 2.250
MX40	12.192	2.438	2.591	11.998	2.350	2.390	3.780	
MX45HC	13.716	2.438	2.896	13.556	2.353	2.695	4.950	
MI20	6.058	2.438	2.591	5.911	2.338	2.340	1.980	

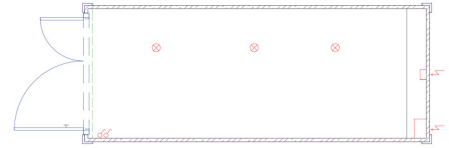
# Special containers

## MR20/MR40 - characteristics:

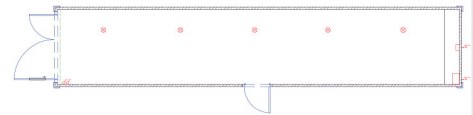
- Suitable for storing fresh, frozen and palletized goods
- Automatic temperature regulation between -25C and +25C
- Asymmetric split double door
- Panic handle (20'), panic door (40')
- Thermal isolation, PVC strip curtain
- Movable ramp
- Frugal Daiki cooling system
- Storing digital data
- 3/5 seal lights with protective grating
- 1 exterior voltage connection of 400V for cooling unit
- 1 exterior voltage connection of 230V for lighting



MR20



MR40

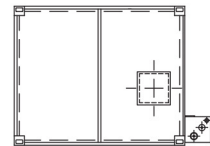


## MT10, MT20 septic tank - characteristics:

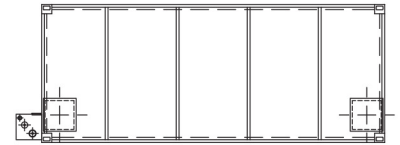
- Suitable for areas without drainage system
- Installation under the sanitary container
- Simple connecting to the sanitary container
- Net capacity: 5/10 m3 water tank, 6 m3 septic tank
- Water pump 1,1 kW



MT10



MT20

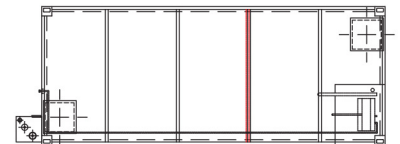


## MF10 diesel tank - characteristics:

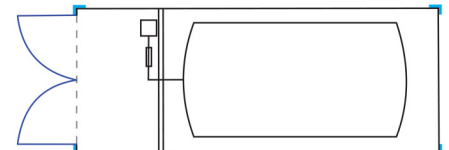
- 10 m3 horizontal steel tank for storing diesel
- Dispenser of flow meter for shut-off valve (nozzle)
- Double steel door
- Storage of 5, 20 or 30 m3



MVT20



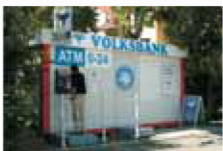
MF10



You can find detailed technical specifications of our products [www.abelhaus.com](http://www.abelhaus.com)

Type	Exterior (mm)			Interior (mm)			
	L	W	H	L	W	H	
MK10	2.991	2.438	2.591	2.831	2.344	2.376	1.350
MK20	6.058	2.438	2.591	5.898	2.344	2.376	2.200
MR20	6.058	2.438	2.591	5.427	2.292	2.310	3.260
MR40	12.192	2.438	2.591	11.560	2.292	2.310	4.650
MT10	2.991	2.438	700				800
MT20	6.058	2.438	700				1.800
MVT20	6.058	2.438	700				1.900
MF10	6.058	2.438	2.591				
MF30	12.192	2.438	2.591				

**Isolated references**



**Project office**



**Showroom**



**Shop**



**Office space**



**Kindergarten/School**



**Containers for festivals**



**Exhibition stand**



**Building control at the entrance**



**Professional sale and container lease**



**ABELHAUS** 1884  
MODULAR HOME MANUFACTURER

